

Culture and church

1

Museums and cultural heritage

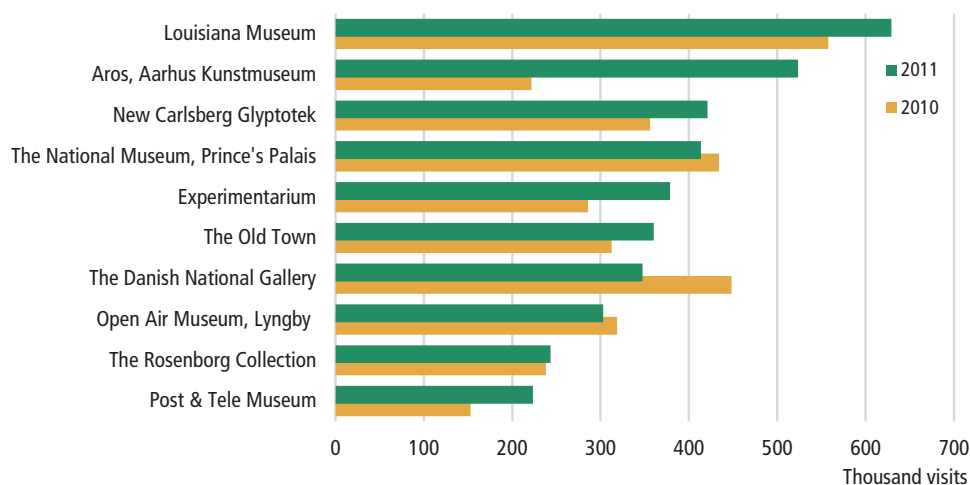
13.3 million visits to museums

In 2011, admission rates of Danish museums reached 13.3 million visitors. Of the 281 museums included in the statistics, 147 are subsidized by the state. Museums subsidized or owned by the state had 10.4 million visitors in 2011, equal to 78 per cent of the total number of visitors in 2011. In 2010, the zoological and botanical gardens had a total of 4.0 million visitors which is 242.000 more visitors than in 2009.

ARoS accounts for a considerably higher number of visitors

Although the art museum Louisiana continues to account for the highest admission rates of 629.000 visitors in Denmark in 2011, Aarhus art museum AROs is rapidly catching up with Louisiana. With an increase in the number of visitors by 136 per cent from 2010 to 2011, AROs is the absolute high jumper among the ten largest museums. With a total of 523,000 visitors, AROs is now ranked as number two. The great increase is partly due to an Asger Jorn exhibition and partly the opening of Your Rainbow Panorama.

Figure 1 Museums - the ten highest admission rates



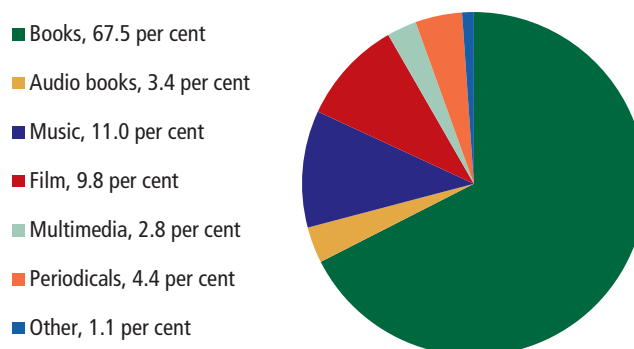
www.statbank.dk/mus

2

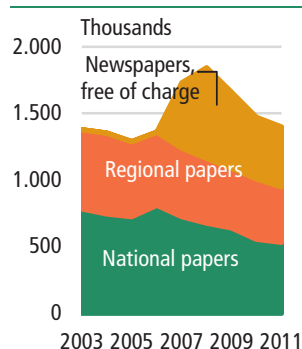
Libraries, films and media

Danes continue to lend a great number of books

In 2010 the public libraries lent a total number 31 million books. This is equal to the circumstance that each Dane lends 6 books per year from one of Denmark's public libraries. In three out of four cases, it is either books (68 per cent) or periodicals (4 per cent) that are lent. The other media are distributed as follows: music (11 per cent), films (10 per cent), audiobooks (3 per cent), multimedia, etc. (3 per cent) and other material (1 per cent).

Figure 2 Lending from public libraries. 2010

www.statbank.dk/bib1

Figure 3 Average daily circulation, total

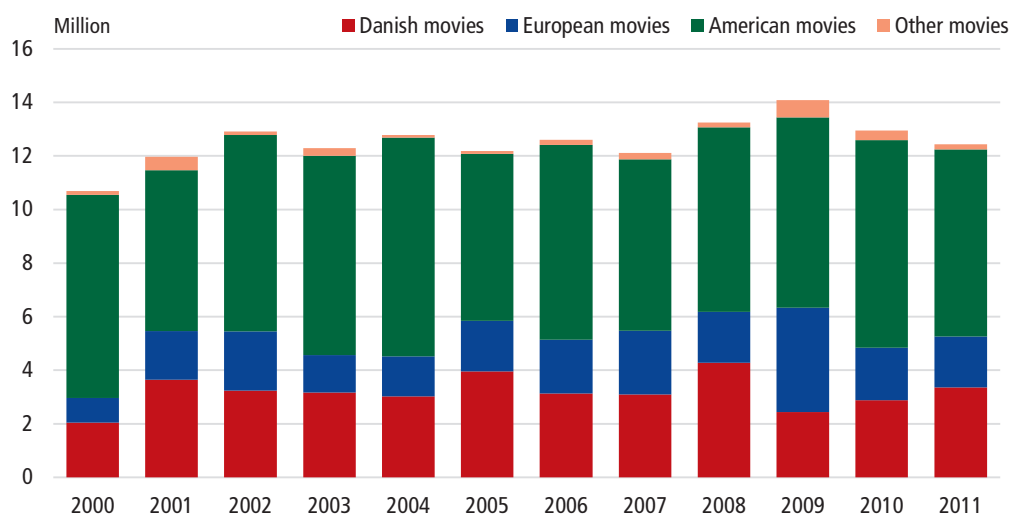
<http://www.statbank.dk/dagblad>

Circulation of newspapers

For Sunday newspapers the circulation has decreased by 5.0 per cent from 877,000 in 2010 to 833,000 newspapers in 2011. The same tendency applies to the circulation of daily newspapers, which has decreased by 4.7 per cent from a circulation of 1,471,000 to 1,402,000 newspapers. The decrease continues the tendency that has been seen for several years.

Modest fall in the number of tickets sold for films

From 2010 to 2011 the number of tickets sold for films screened at Danish cinemas saw a fall of 4 per cent and reached just over 12 million tickets sold. The number of tickets sold for American films showed a fall of 759,000 tickets, corresponding to 9.8 per cent compared to 2010, while Danish films increased by 17 per cent. In 2011, the three films seen by most people were *Harry Potter and the deathly hallows: Part 2*, *Dirch* and *Klassefesten*. Danish films accounted for 27 per cent of all tickets sold in 2011. This is an increase of 5 percentage points compared to the previous year. The most popular Danish film was *Dirch*, selling 471,819 tickets in 2011.

Figure 4 Tickets sold for movies

<http://www.statbank.dk/bio>

Danes watch television 3 hours and 18 minutes per day

97 out of 100 households in Denmark have a TV set and most households have access to DR1 and TV2. Today, Danes also have access to a wide range of pay TV channels. The average viewing rates of Danes were 3 hours and 18 minutes in 2011, which is an increase by 7 minutes compared to 2010.

Danes watch especially entertainment on TV

Music, entertainment and dramas are watched almost half of the time that Danes spent on watching TV. One-fourth of the time Danes watch news, etc., while 15 per cent of the time is spent on programmes for education, information and culture. Sports events take up 8 per cent, while regional TV broadcasts take up only 3 per cent of total television viewing.

Figure 5 Television viewing by program type. 2011

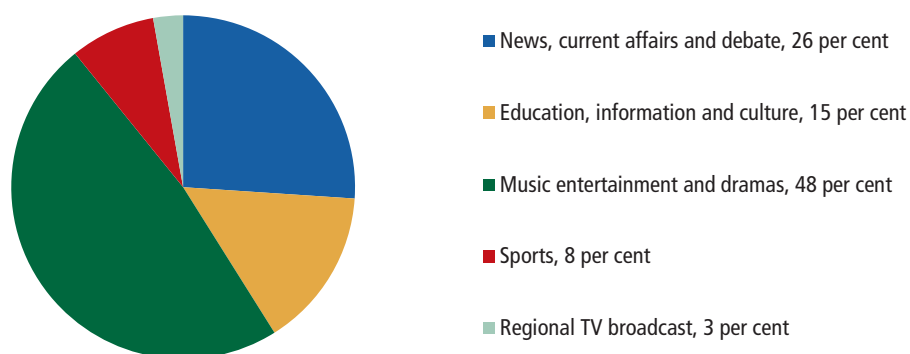


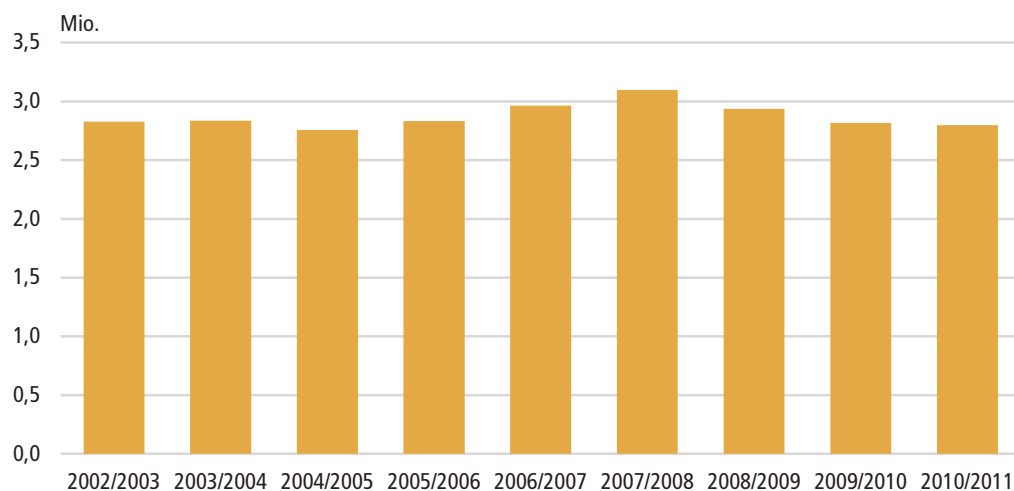
Table 90

3

Music, theatres, sports and leisure

Fewer theatregoers

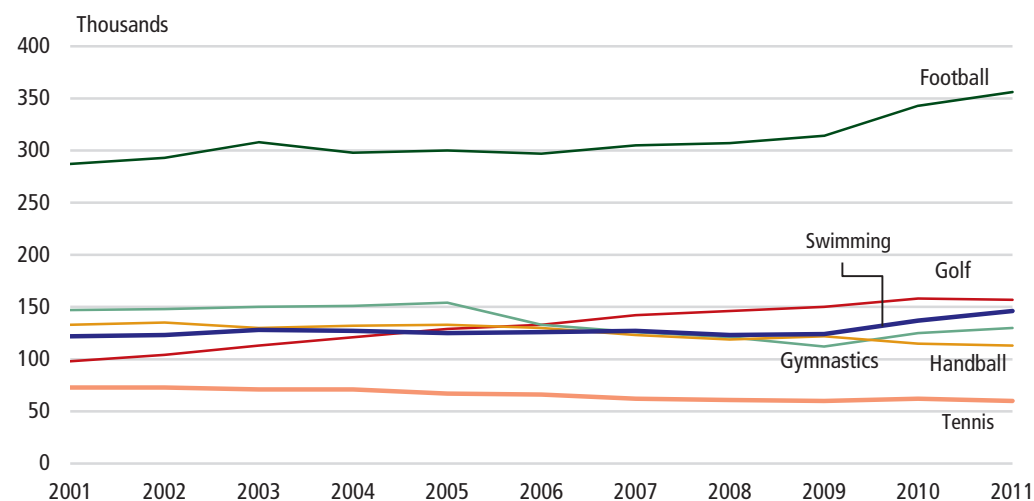
Admissions to theatres decreased by 0.7 per cent during the season of 2010-2011 compared to the previous season. Hereby 19.000 fewer visited the theatres although the number of performances had increased by 3 per cent. Hence there was bigger number of admissions for every performance; 180 admissions in 2010-2011 compared to 174 admissions for each performance in 2009-2010.

Figure 6 Admissions to Danish theatres

<http://www.statbank.dk/teat1, teat2 and teat3>

Football is the national sport of Denmark

Football is the most popular sport in Denmark measured in terms of members, and from 2010 to 2011 the Danish Football Association (DBU) saw an increase in membership by 4 per cent. Danes have also in great numbers taken up golf, and golf clubs have experienced a steadily increasing membership during the last 10 years. However, golf clubs saw a minor fall in membership in 2011.

Figur 7 Members of Danish sports organizations

<http://www.statbank.dk/medlem>

4

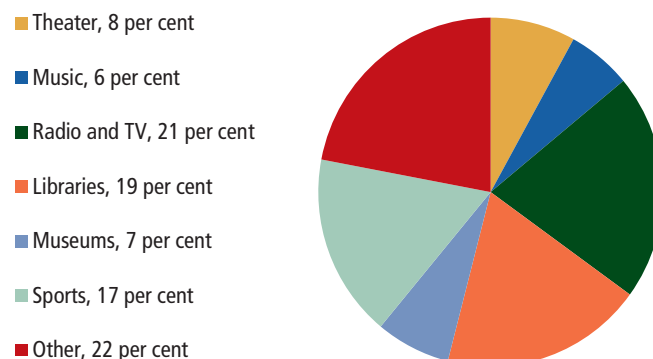
Other cultural activity

Radio and TV receive the greatest subsidies

In 2011, the largest share of public subsidies to culture went to radio and TV, i.e. 21 per cent. Libraries came in second with 19 per cent, while sports received 17 per cent of total subsidies. The share of subsidies with regard to sports decreased compared to

2009, when 21 per cent of public subsidies went to purposes of sports. Theatres, museums and music ranged around 6 and 8 per cent of the public subsidies to culture.

Figure 8 Public subsidies to cultural activities. 2011



<http://www.statbank.dk/bevil02>

Unchanged public subsidies to culture

In 2011 public subsidies to culture reached just over DKK 20 billion. The same amount applied to 2010, and the picture was largely the same in the previous year. In 2011 the subsidies were distributed by 56 per cent from central government and 44 per cent from local government. Most central government subsidies are granted via the Danish Finance Act (DKK 6.1 billion in 2011), while receipts from licences contributed with DKK 4.1 bn. and receipts from state football pools contributed with DKK 1.1 billion.

5

Church

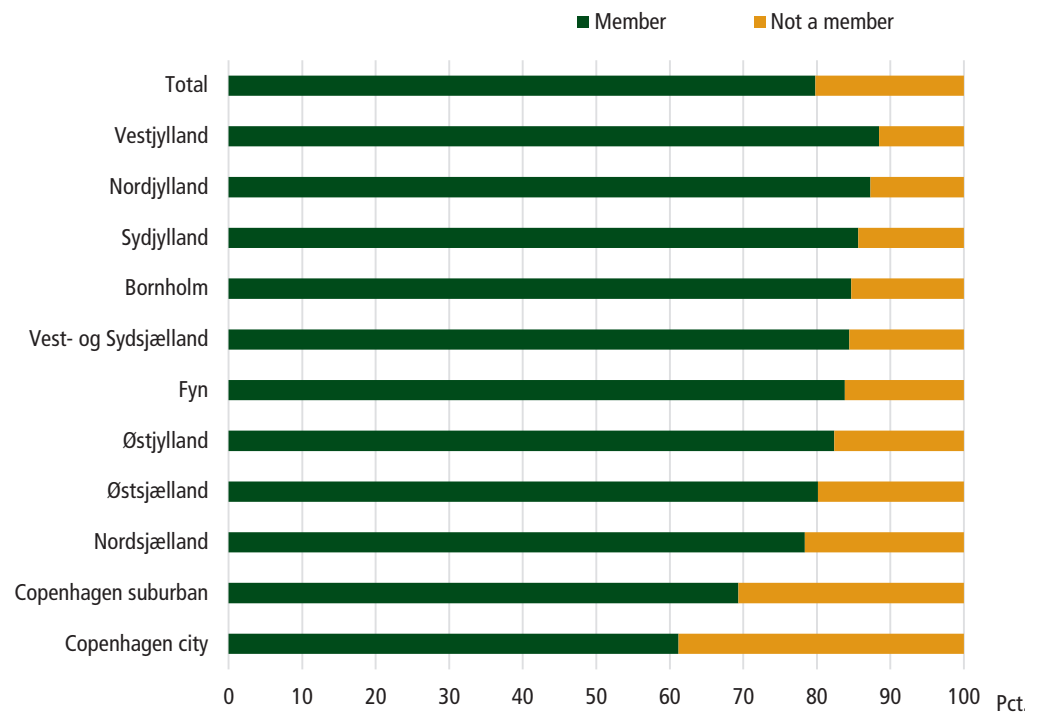
Fewer members of the Evangelical Lutheran Church in Denmark

An increasing number of people have decided not to be members of the Evangelical Lutheran Church in Denmark. The share of the Danish population with membership was 79.8 per cent on 1 January 2012. The share shows a falling tendency and made up 80.4 per cent in 2011. The share was 84.3 per cent ten years ago.

Largest membership of the Evangelical Lutheran Church in Denmark is seen in Western Jutland

The share of members of the Evangelical Lutheran Church in Denmark differs among the various regions of Denmark. The region accounting for the highest number is Western Jutland, followed by Northern Jutland and Southern Jutland. The region with the lowest number of members is Copenhagen town, followed by Copenhagen outskirts and Northern Zealand.

Figure 9 Membership of the Evangelical Lutheran Church. 1 January 2012



<http://www.statbank.dk/km55>

Table 74 Danish National Archives and provincial archives. 2011

	Collections		Material received under delivery schemes	Reading rooms		Long-distance loans Circulation	Staff paid out of own budget
	Total shelf capacity	Size at the end of the year		Visitors	Circulation		
	thousand metres		metres	thousands		number	
Archives total	762	426	12 360	39	133	16 641	194
Danish National Archives	538	204	6 295	12	52	5 453	94
Provincial archives in:							
Copenhagen	50	50	640	12	23	1 828	12
Odense	24	20	804	5	7	1 474	12
Viborg	63	74	3 089	7	39	5 895	43
Aabenraa	17	21	1 174	1	5	1 036	8
Industrial Archives	70	57	358	2	7	955	14
Danish Data Archives	-	-	-	-	-	-	11

Source: Danish National Archives

www.sa.dk**Table 75 Admissions to zoological gardens**

	2010	2011
Total number of zoological gardens	25	28
	thousands	
Admissions total	4 017	4 404
Of which:		
Københavns Zoo	1 056	1 152
Odense Zoo	349	406
Aalborg Zoo	326	377
Givskud Zoo	280	327
Randers Regnskov	285	291
Jesperhus Resort	220	215
Knuthenborg Safaripark	202	202
Nordsømuseum	187	186
Ree Park - Ebeltoft Safari Gravlev	145	173
Jyllands Park Zoo	165	166
Kattegatcentret	151	145
Danmarks Akvarium	132	142
AQUA Silkeborg	102	110
Den Geografiske Have	60	59
Fjord- og bæltcentret i Kerteminde	53	53
Øresundsakvariet	47	53
Skandinavisk Dyrepark, Nødager	52	53
Odsherred Zoo - Dyrepark	50	50
Skærup Zoo	35	35

Note: Figures on the individual zoological gardens include zoological gardens for which the number of visitors has been stated for both years and have had more than 30,000 visitors in 2011 only. Admissions total include all zoological gardens.

www.statbank.dk/mus

Table 76		Admissions to museums			
	2010	2011		2010	2011
Total number of museums	267	281	Nationalmuseet, Frøslevlejrens museum	46	48
Cultural historical museums	175	183	Lemvig Museum	53	46
Art museums	57	58	Handels- og Søfartsmuseet Kronborg	41	44
Natural science museums	5	4	Industrimuseet, Horsens	36	41
Other museums	30	36	Bork Vikingehavn	48	41
			Koldkrigsmuseum Stevnsfort	38	40
Admissions (thousands)					
a. Cultural historical museums, total	6 763	6 912	b. Art museums, total	3 039	3 464
Of which:			Of which:		
Nationalmuseet, Prinsens Palais	434	413	Louisiana Museum for Moderne Kunst	558	629
Den Gamle By	312	360	Aros, Aarhus Kunstmuseum	222	523
Nationalmuseet, Frilandsmuseet	319	303	Ny Carlsberg Glyptotek	356	421
Rosenborgsamlingen	238	243	Statens Museum for Kunst	448	348
Post & Tele Museum	153	224	Arken Museum for Moderne Kunst	120	182
Egeskov Slot	201	217	Skagens museum	103	118
Kronborg Slot	195	204	Ordrupgaard	60	64
Frederiksborg Slot	175	189	Designmuseum Danmark	66	63
Moesgård Museum	128	125	Kunstmuseet Trapholt	63	61
Fregatten Jylland	125	117	Kunsten Museum of Modern art Aalborg	66	61
Vikingskibsmuseet	111	115	Thorvaldsens museum	53	56
Museet på Koldinghus	115	113	Randers kunstmuseum	51	53
Danmarks Jernbanemuseum	91	104	KØS Museum for Kunst i Det Offentlige Rum	30	52
Dansk Landbrugsmuseum Gl. Estrup	87	101	Glas museet, Ebeltoft	53	47
Gammel Estrup Herregårdsmuseet	87	101	Vejle Kunstmuseum	17	44
Danfoss Universe A/S	105	99	Johannes Larsen Museet	53	42
Den Fynske Landsby	85	91	Naturama	73	75
Marstal Søfartsmuseum	85	91	Naturhistorisk Museum	51	50
H.C. Andersens Hus	87	87			
Arbejdermuseet i København	101	77	c. Natural science museums, total	270	308
Nationalmuseet, Frihedsmuseet	64	73	Of which:		
Øhavsmuseet	83	71	Naturama	73	75
Hjerl Hedes Frilandsmuseum	72	70	Naturhistorisk Museum	51	50
Valdemars Slot, Herregårdsmuseum	71	68			
Gavnø Slot	62	67	d. Other Museum, total	1 959	2 573
Amalienborg Museet Christian VIII's Palæ	87	67	Of which:		
Esrum Kloster og Møllegård	48	64	Eksperimentarium	286	379
Andelslandsbyen Nyvang	54	61	Carlsberg Besøgscenter	158	220
Ruinerne under Christiansborg	34	57	De Kongelige Repræsentationslokaler	117	142
Museumscenter Hanstholm	56	56	Fiskeri- og Søfartsmuseet / Saltvandsakvariet	125	121
Museum Østjylland, Randers	55	55	Det Danske Filminstitut/ Museum og Cinematek	117	107
Københavns Museum	50	55	Guinness World Record Museum	77	80
Museet Ribes Vikinger	62	53	Naturbornholm	60	63
Tøjhusmuseet	43	53	H. C. Andersen Eventyrhuset	71	62
Kulturhistorie Sønderborg Slot	55	52	Bornholms Middelaldercenter	59	62
Nationalmuseet, Liselund Gl. Slot	49	51	Ripley's Believe it or not	66	61
Historiecenter Dybbøl Banke	44	51	Sophienholm	51	60
Det Kongelige Bibliotek Bog- og Fotomuseum	35	50	Det Mystiske Eksperimentarium	50	54
Danmarks Tekniske museum	56	50			
Kroppedal Museum	37	48			
Møntergården	50	48	a-d. Total admission	12 030	13 257

Note: Figures on the individual museum include museums for which the number of visitors has been stated for both years. Figures for each museum category include all museums. The table includes museums with more than 40,000 visitors in 2011 only.

www.statbank.dk/mus

Table 77 Public libraries, key figures		
	2009	2010
	loan	
All materials	48 383 757	45 996 736
Books	32 269 354	31 046 855
Talking books	1 580 818	1 558 455
Music recordings	5 858 059	5 044 372
Animated pictures	4 606 516	4 492 835
Multimedia	1 458 849	1 291 657
Other materials	544 900	527 518
Serial publications	2 065 261	2 035 044
	stock	
All materials	24 045 005	23 160 000
Books	19 668 547	18 884 295
Talking books	510 295	468 782
Music recordings	2 761 562	2 724 160
Animated pictures	477 644	490 053
Multimedia	220 728	218 549
Other materials	281 031	261 457
	subscribers	
Serial publications	125 198	112 704
	download	
Uses of electronic resources	7 332 251	11 394 197
	DKK thousands	
Expenditure, materials	368 044	354 495

www.statbank.dk/bib1

Table 78 Public libraries by activity		
	2009	2010
	number	
Main libraries	97	97
Branch libraries	369	353
Mobile libraries	33	32
Servicspot	40	43
	hours	
Main libraries, weekly opening hours	4 152	4 198
Branch libraries, weekly opening hours	8 912	11 566
Mobile libraries, opening hours	664	651
	number	
Active borrowers total	1 763 127	1 726 518
Active borrowers, domestic municipalities	1 536 651	1 513 870
Active borrowers, other municipalities	226 476	212 648
Visitors	36 048 125	36 124 933
Website visits	21 958 608	22 752 141
Website pages visited	174 141 565	175 745 795
Audience workstations	4 971	5 050
Audience workstations with internet	4 574	4 802
Librarianserved institutions	16 096	15 114
Librarians, FTE	2 203	2 112
Other academic staff, FTE	133	177
Clerical staff, FTE	1 868	1 790
Other staff, FTE	394	425

www.statbank.dk/bib2

Table 79		Research libraries	
	2009	2010	
	hours		
Weekly opening hours, main library	..	1 343	
Filialernes samlede åbningstid, timer pr. uge	..	1 530	
Seats with tablespace	7 918	8 529	
	sqm		
Audience area	82 424	86 293	
Closed storage area	75 531	75 593	
Total building area	199 863	204 405	
	number		
Audience workstations	1 484	1 496	
Website visits	10 229 921	8 793 617	
Website pages visited	135 204 336	90 262 391	
Active borrowers	244 598	254 089	
Visitors	3 849 887	4 261 225	
Loaner requests	..	627 129	
Reference requests	..	216 191	
Exhibitions	113	206	
Events	161	172	
User education, performed lessons	7 692	8 617	
User education, number of pupils	71 435	79 953	
	FTE		
Staff total	1 362	1 366	
Research librarians	151	153	
Librarians	461	457	
Assistants	371	370	
Other academic staff	161	176	
Other staff	219	210	
Staff of which in the employment scheme	77	70	

www.statbank.dk/forsk1

Table 80		Daily newspapers										
	Number of daily newspapers						Circulation					
	Weekdays ¹			Sundays			Weekdays			Sundays		
	2009	2010	2011	2009	2010	2011	2009	2010	2011	2009	2010	2011
	thousands											
Daily newspapers, total²	37	35	33	10	11	11	1 660	1 471	1 402	931	877	833
By size of cir. per issue:												
Under 10 000	10	8	8	-	-	-	63	49	52	-	-	-
10 000-19 999	10	11	9	-	1	1	150	152	122	-	13	13
20 000-29 999	4	3	3	-	1	1	98	71	69	-	28	25
30 000-49 999	1	2	2	1	-	-	44	89	85	31	-	-
50 000-99 999	6	5	7	4	5	6	404	331	511	253	336	418
100 000 +	6	6	4	5	4	3	900	779	563	648	499	378

¹ Included free newspapers 24timer, Urban and Metroxpress. ² Average circulation (papers per day) measured in the first half year of 2011.

Source: *Dansk Oplagsbulletin 2011* (Bulletin of the Danish Audit Bureau of Circulations)

www.statistikbanken.dk/dagblad

Table 81 The 20 largest daily newspapers

	Circulation ¹			
	Weekdays ²		Sundays	
	2010	2011	2010	2011
	thousands			
MetroXpress	199	201	•	•
24Timer	138	154	•	•
Urban	127	93	•	•
Jyllands-Posten	112	104	147	135
Politiken	103	99	128	125
Berlingske	101	101	121	118
Ekstra Bladet	74	67	103	94
Børsen	73	73	•	•
B.T.	68	67	95	89
JydskeVestkysten	63	60	70	67
Nordjyske Stiftstidende	52	52	60	57
Fyens Stiftstidende	47	46	57	53
Frederiksborg Amts Avis	41	39	•	•
Kristeligt Dagblad	27	27	•	•
Information	22	22	•	•
Aarhus Stiftstidende	22	20	28	25
Lolland-Falsters Folketidende	18	17	•	•
Vejle Amts Folkeblad/Fredericia Dagblad	18	16	•	•
Sjællandske	17	16	•	•
Horsens Folkeblad	14	14	•	•

¹ Average circulation (papers per day) measured in the first half of 2011. ² Include free newspapers 24timer, Urban and MetroXpress.

Source: *Dansk Oplagsbulletin 2011* (Bulletin of the Danish Audit Bureau of Circulations)

www.statistikbanken.dk/dagblad1

Table 82 Magazines

	Circulation		
	2009	2010	2011
	thousands		
Billed Bladet	193	186	172
Familie Journalen	185	183	172
Se & Hør	169	159	148
Ude og Hjemme	158	143	132
Hjemmet	143	132	124
Her og Nu	108	106	98
Bo Bedre	80	78	79
Ugebladet Søndag	83	81	78
Alt for damerne	66	61	58
Femina	61	63	54
Illustreret Videnskab	65	54	53
Kig Ind	60	53	43
M!	46	45	42
Costume	43	41	41
I Form	57	39	41
Woman	50	48	41
Vi Unge	43	40	36
Anders And & Co.	48	39	35
Hendes Verden	40	39	35
Isabellas	44	44	35

Note: Included are major, consumer-paid magazines. Free magazines are not included.

Source: *Dansk Oplagsbulletin 2011* (Bulletin of the Danish Audit Bureau of Circulations)

www.statistikbanken.dk/magasin

Table 83 The most popular films shown in cinemas

1976-2011			2011		
Week and year when first shown	Film titles	Total number of paid admissions	Week and year when first shown	Film titles	Total number of paid admissions
		thousands			thousands
1 04-1998	Titanic	1 364	1 28-2011	Harry Potter and the deathly hallows: Part 2	652
2 51-2001	The Lord of the Rings: The Fellowship of the Ring	1 331	2 34-2011	Dirch ¹	472
3 40-1976	Olsen banden ser rødt ¹	1 201	3 41-2011	Klassefesten ¹	462
4 51-2003	The Lord of the Rings: The Return of the King	1 167	4 43-2011	The adventures of Tintin: The secret of the unicorn	439
5 51-2009	Avatar	1 158	5 20-2011	Pirates of the Carribean: On stranger tides	409
6 51-2002	The Lord of the Rings: The Two Towers	1 123	6 40-2011	Far til fire – tilbage til naturen ¹	386
7 11-1976	One Flew over the Cuckoo's Nest	1 120	7 06-2011	Alle for én ¹	368
8 39-1977	Olsen banden deruda ¹	1 045	8 05-2011	Tangled	348
9 51-1982	E.T. – The Extra Terrestrial	1 019	9 31-2011	Cars 2	301
10 37-1978	Grease	1 006	10 31-2011	Kung Fu Panda 2	289

¹ Danish films.

www.dst.dk/bio
Table 84 Films by nationality. 2011

	Number of films shown	Paid admissions	Admission takings total	Film hire	Film hire as percentage of admissions takings
		thousands	DKK thousands		per cent
Films shown in cinemas. total	656	12 433	749 802	323 413	43
Danish	110	3 363	186 459	80 284	43
Foreign, total	546	9 071	563 343	243 129	43
Of which European	224	1 899	114 928	50 135	44
American	259	6 985	439 519	189 532	43
Other	63	186	8 897	3 462	39
Films shown in cinemas in 2010	641	12 952	795 677	353 812	44

¹ Danish films.

www.dst.dk/bio
Table 85 Films by year when first shown. 2011

	Number of films shown	Paid admissions	Admissions takings, total	Film hire as percentage of admissions takings
		thousands	thousands DKK	per cent
Films shown in cinemas, total	656	12 433	749 802	43
First shown:				
2011	256	11 484	695 832	43
2010	130	886	51 560	39
2009	56	19	635	38
2008	28	3	107	43
2007	28	5	223	37
2006	22	2	59	45
2001-2005	71	14	440	42
1996-2000	17	2	81	38
1991-1995	5	2	115	32
1986-1990	4	1	17	42
1981-1985	4	0	15	48
1971-1980	9	5	182	35
1961-1970	10	1	36	59
1951-1960	9	1	58	41
1951 and before	0	0	0	0
Unknown	7	8	442	47

www.statbank.dk/1982

Table 86		Cinemas		
		2009	2010	2011
Cinemas at end of year				
	Number of cinemas	163	161	161
	Number of cinema screens (thousands)	58	57	57
Cinema activity				
	Paid admissions (thousands)	14 082	12 952	12 433
	Admissions takings excl. VAT (DKK mio.)	837	796	750
	Film hire (DKK mio.)	376	354	323

www.statbank.dk/1982

Table 87		Books translated. 2011							Danish translations, total	
		Original language								
		Swedish	Norwegian	Other Nordic languages	English/American	German	French	Russian	Other languages	
		number of titles								
Translations, total		318	169	20	1 294	231	139	4	202	2 377
Fiction		235	104	17	858	138	101	4	177	1 634
Non-fiction		83	65	3	436	93	38	-	25	743

Source: Danish Bibliographic Centre

Table 88		Books published. 2011						
		Books and pamphlets						
		Type		Edition		Total	Of which	
Decimal classification		Pamphlets (17-48 pages)	Books (over 48 pages)	First editions	Revised editions		School text books ¹	Children's books
		number of titles						
Total		3 125	9 734	10 782	2 077	12 859	904	1 718
Fiction, total	82-88	1 125	2 600	3 048	677	3 725	432	1 451
Novels and short stories		40	1 468	1 015	493	1 508	52	1 324
Plays		2	25	26	1	27	-	5
Poetry		64	198	250	12	262	1	44
Comics, etc.		17	78	90	5	95	-	78
Books for children and young persons		1 002	831	1 667	166	1 833	379	•
Non-fiction, total	00-81.89-99	2 000	7 134	7 734	1 400	9 134	472	267
General	00-07	40	137	169	8	177	7	3
Philosophy	10-19	47	323	290	80	370	17	2
Religion	20-29	57	233	258	32	290	23	16
Sociology	30-39, 59	504	1 558	1 606	456	2 062	73	24
Geography and travel	40-49	103	336	338	101	439	17	3
Natural sciences	50-58	172	414	518	68	586	125	62
Applied sciences	60-69	642	2 201	2 425	418	2 843	32	79
Arts, games, sports	70-79	252	708	885	75	960	28	57
Literature, languages	80-81.89	49	261	250	60	310	108	5
History	90-99	134	963	995	102	1 097	42	16

¹ Not including text books for higher-education establishments, further education, adult education, and self-study.

Source: Danish Bibliographic Centre

Table 89 Hours of radio broadcasting, DR

	2009		2010	
	Analog	Digital	Analog	Digital
	hours			
By kind of programme	54 258	221 460	54 162	184 151
News service	4 692	10 147	4 712	10 122
Current affairs	23 472	1 412	23 584	1 139
Information and culture	4 224	1 321	4 036	1 685
Drama/Fiction	111	1 602	121	137
Music	14 722	199 822	15 630	163 777
Entertainment	5 301	6 995	4 285	7 025
Sports	797	7	910	7
Education	-	-	-	-
Choir- and orchestra activity	112	1	122	3
Presentation and Service	827	153	762	256

Source: Danish Broadcasting Corporation

Table 90 Hours of television broadcasting, DR and TV2

	DR (Danish Broadcasting Corporation)		TV2	
	2009	2010	2009	2010
	hours			
Television hours of broadcasting, total	22 201	32 811	12 918	12 576
National TV, total	22 201	32 811	7 296	7 207
News service	9 689	9 655	799	719
Current affairs	1 781	1 570	1 172	1 164
Information and culture	3 720	7 645	456	417
Education	325	565	-	2
Music	766	1 052	11	20
Entertainment	367	835	517	724
Danish drama	728	1 408	339	260
Foreign drama	4 147	8 605	3 234	2 852
Sports	160	633	500	817
Programme introduction & service	518	842	268	232
Regional TV, total	•	•	4 182	4 031
Advertising	•	•	1 440	1 338
By kind of production¹				
Own productions	3 588	3 968	1 511	1 425
Other productions	2 017	2 877	2 999	3 118
Repeat broad casts	16 596	25 966	2 786	2 664

¹ For TV2 excl. regional TV and advertising.

Source: DR (Danish Broadcasting Corporation) and TV2

Table 91 Household access to TV-channels

	2010		2011	
	Number of households	Number of households with television- sets	Number of households	Number of households with television- sets
	thousands	per cent	thousands	per cent
Total number of households 1st of Jan.	2 573	..	2 584	..
Of which households with television sets	2 496	100	2 497	100
DR 1	2 486	100	2 481	99
DR 2	2 468	99	2 461	99
DR Update	1 490	60	1 684	67
DR K	1 956	78	2 094	84
DR HD	1 080	43	1 389	56
DR Ramasjang	1 988	80	2 093	84
TV2	2 479	99	2 477	99
TV2 ZULU	1 766	71	1 715	69
TV2 Charlie	1 753	70	1 725	69
TV 2 Film	1 405	56	1 367	55
TV2 Film HD	492	20
TV 2 News	1 530	61	1 605	64
TV 2 Sport	1 224	49	1 209	48
TV 2 Sport HD	273	11	431	17
TV3	1 714	69	1 669	67
TV3+	1 556	62	1 486	60
TV3+ HD	279	11	516	21
TV3 Puls	1 123	45	1 105	44
Kanal 4	1 653	66	1 542	62
Kanal 5	1 541	62	1 639	66
Kanal 5 HD	275	11	530	21
6eren	1 370	55	1 350	54
6'eren HD	464	19
Voice TV	873	35	840	34
Discovery Channel	1 408	56	1 311	53
Discovery World	429	17	406	16
Discovery Science	278	11	236	10
Animal Planet	1 353	54	1 299	52
Cartoon Networks	1 120	45	1 080	43
Boomerang	528	21	478	19
MTV	1 260	51	1 200	48
Nickelodeon	792	32	834	33
VH-1	883	35	898	36
TCM	1 016	41	872	35
Disney Channel	1 194	48	1 115	45
Playhouse Disney	365	15
Disney XD	662	27	660	26
Eurosport	1 284	51	1 208	48
Eurosport 2	472	19	530	21
DK4	1 407	56
NRK	982	39
TV 2 Norge	746	30
Sverige 1	1 391	56
TV4 Sverige	1 144	45	1 048	42

Source: TNS Gallup A/S, Annual Survey 2010 and 2011

Table 92 Viewing time by channel and type of program. 2011

	News, Current Affairs and Debate	Education, Information and Culture	Music, Entertainment, Drama and Fiction	Sport	Regional Television
	per cent				
Total Program viewing time	26	15	48	8	3
DR 1	36	16	44	5	..
DR 2	22	40	36	2	..
DR Update	100
DR K	1	52	46
DR HD	1	32	63	4	..
DR Ramasjang	..	20	80
TV2	35	10	34	11	11
TV2 ZULU	..	2	97	1	..
TV2 Charlie	..	2	97
TV2 Film	100
TV2 News	99	1
TV 2 Sport	100	..
TV3	..	30	70
TV3+	..	13	56	31	..
TV3 PULS	..	52	43	4	..
Kanal 4	5	30	66
Kanal 5	9	3	87
6eren	1	5	65	29	..

Source: TNS Gallup and TV-meter Annual Report

www.statistikbanken.dk/for4213 and for4214

Table 93 The Danish Broadcasting Corporation and TV2, revenue and expenditure

	Danish Broadcasting Corporation			TV2		
	2008	2009	2010	2008	2009	2010
	thousands					
Number of household	2 352	2 417	2 418	2 352	2 417	2 418
Radio and TV licenses¹	2 468²	2 514³	2 518⁴	2 468²	2 514³	2 518⁴
Of which: Medielicens	2 294	2 367	2 368	•	•	•
Licences for radio only	58	50	50	•	•	•
Companies witch pay licenses	116	97	100	•	•	•
	DKK mio.					
Annual accounts						
Revenue, total	3 674	3 760	3 861	2 206	2 060	2 147
Of which: Licenses	3 343	3 392	3 493	-	-	-
Commercial, sponsors	2	4	4	1 597	1 219	1 318
Other	329	364	364	609	841	829
Total expenditure	3 330	3 338	3 328	-1 945	-1 932	-1 974

¹ DR- licenses and Programme service collects the total licenses fees for DR, TV2, local radio- and TV and others. ² 1.6.2008. ³ 31.12.2009. ⁴ 31.12.2010.

Source: DR and TV2

Table 94 Music sales

	Sales		Turnover	
	2010	2011	2010	2011
	number		DKK thousand	
Total¹	281 196 853	454 036 742	452 010	412 204
CD-albums	5 432 531	4 035 442	262 580	209 753
LP/ MC	39 506	35 402	3 922	3 351
DVD-audio	36 101	23 254	1 559	989
CD-sets ²	606 097	464 790	46 837	31 659
CD/sacd	183	111	16	9
CD-maxi/ Cd-single	46 533	1 714	705	84
Digital albums	869 628	7 800 163	36 475	46 880
Digital Track	13 458 541	24 131 675	43 595	53 471
Digital other ³	256 700 894	416 797 475	51 032	64 556
Ringtunes single	394 786	494 751	1 357	851
Mobil other	3 611 149	251 965	3 893	601
Other	904	-	39	-

Note: The members of IFPI Denmark are Danish and foreign record companies. The turnover of these record companies account for more than 95 per cent of the total sale in Denmark.

Source: IFPI Denmark

www.ifpi.dk

¹ Incl. Greenland and The Faeroe Islands. ² Double-albums and similar products containing more than one phonogram in one product. ³ The majority is accounted by subscription based sales.

Table 95 Performing art. 2010/2011

	Number of productions	Number of performances				Audience	
		Total	Of which Danish	New performances		Total	Paid admissions
				Total	Of which Danish		
number		thousands					
State-subsidized theatres, total	11 717	589	432	410	265	2 092	...
The Royal Theatre, total	625	38	14	24	12	416	374
Plays	336	12	6	10	5	131	110
Operas	116	10	1	7	4	139	129
Ballets and dance	103	14	6	6	2	106	98
Operetta and musical	41	1	-	-	-	36	34
Revue and cabaret	29	1	1	1	1	4	3
The regional theatres, total	1 852	78	40	75	36	514	460
Theatre cooperation of greater Copenhagen theatre	781	37	21	37	22	262	228
Regional theatres outside Copenhagen	1 071	41	19	38	14	252	232
Other state-subsidized theatres, total	9 240	473	378	311	217	1 162	...
folketeatret.dk/turne and The Danish National Opera	337	13	7	13	5	124	...
Local city-theatres	2 622	100	77	90	61	308	...
Local theatres	2 990	164	131	93	64	417	...
Theatres subsidized by the Danish Arts Council	3 291	196	163	115	87	313	...
Non subsidized theatres, total	3 783	236	705	...
Ballet and dance	474	25	64	...
Performance	155	10	12	...
Opera	25	6	6	...
Operetta and musical	384	7	283	...
Plays	1 958	117	244	...
Revue and cabaret	121	7	36	...
Other	666	64	59	...

Note: Theatres' activities are excluding guest performances. The statistics concerns the season, running from 1st July to 30th June.

www.statbank.dk/teat1, teat2 and teat3

Table 96 Sports federations and youth and outdoor activities organizations

	Number of members	
	2010	2011
	— thousands —	
Youth organizations, total¹	84	85
The Danish Scout Association	26	27
Voluntary Christian Boys' and Girls' Association, FDF	23	22
The Green Girl Guides in Denmark	5	5
YMCA Scouts in Denmark	24	25
Danish Baptists' Scout Organisation	1	1
DUI - LEG og VIRKE Children's Organisation	5	5
Sports Federations²		
The Danish Sports Federations	1 721	1 734
Badminton	95	91
Football (DBU)	343	357
Golf	158	157
Gymnastics	125	130
Handball	115	113
Riding	74	73
Sailing	58	57
Swimming	137	146
Tennis	62	60
Other federations	554	550
The Danish Gymnastics and Athletics Federations	1 700	...
Badminton	145	...
The Danish Rifle Federation	141	...
Football	284	...
Gymnastics	342	...
Handball	117	...
Swimming	166	...
Tennis	55	...
Other federations	340	...
Sports for children	8	...
Exercise and leisure	78	...
Continuation schools, etc.	24	...
The Danish Firms' Sports Federations	321	331
Badminton	19	19
Football	32	32
Handball	2	2
Bowling	21	20
Fitness centre	37	38
Keep-fit exercises	11	11
Jogging	29	29
Other sports	170	180
Other outdoor activities organizations		
The Danish Camping Association	151	155
The Danish Cyclist Federation	17	17
The Danish Society for the Conservation of Nature	132	133
The Danish Hunting Federation	95	95
The Danish Garden Society	40	41

¹ Includes members of the uniformed groups under the association for children's and youth organizations. ² Includes active members, the other organizations include associate members too. If a person takes part in more than one sport, the person will usually be counted more than once.

Table 97 Attendance at selected sporting events

	Season 2009/2010			Season 2010/2011			Per cent changes in the number of avr. attendance
	Attendance	Matches	Average attendances per match	Attendance	Matches	Average attendances per match	
Football							
Superleague – men	1 645 907	198	8 313	1 394 436	198	7 043	-15.3
1st Division – men	314 358	240	1 310	356 200	240	1 484	13.3
2nd Division – men	123 430	480	257	138 013	480	288	11.8
Handball							
Handball league – men	279 025	217	1 286	456 038	226	2 018	56.9
1st Division – men	85 479	185	462	77 073	192	401	-13.1
Handball league – women	169 979	167	1 018	162 659	165	986	-3.1
1st Division – women	36 963	194	191	39 576	192	206	8.2
Ice hockey							
Al-Bank league – men	209 703	162	1 294	202 956	156	1 301	0.5
Play-offs and final games - men	61 396	37	1 659	67 720	30	2 257	36.0
Season, total ¹ – men	271 099	199	1 362	270 676	186	1 455	6.8
Badminton²							
Denmark Open (Aarhus)	5 770	9 500
Copenhagen Masters (Cph.)	3 574	3 876
DM (Aalborg)	4 226	3 125
Hold-finalen (Guldmatchen - Cph.)	2 165	2 165
Basketball							
Basketball league – men	79 361	154	515	79 638	159	501	-2.8

¹ Cup ties are excluded. ² Only larger tournaments, includes badminton for both men and women.

Source: Danish Football Association, Danish Handball Association, Danish Ice Hockey Union, Danish Badminton Federation, Danish Basketball Federation

www.statbank.dk/sport1

Table 98 Advertising expenditure

	2008		2009		2010	
	DKK mio.	per cent	DKK mio.	per cent	DKK mio.	per cent
Advertising expenditure, total	27 633	100.0	24 303	100.0	24 694	100.0
Press advertising turnover, total	7 936	28.7	6 168	25.4	5 874	23.8
Daily papers	2 735	9.9	2 065	8.5	1 946	7.9
Magazines	437	1.6	328	1.3	333	1.3
Professional journals, etc.	999	3.6	742	3.1	707	2.9
Local papers	2 554	9.2	2 143	8.8	2 033	8.2
Other	1 211	4.4	890	3.7	855	3.5
Other advertising activities, total	19 697	71.3	18 135	74.6	18 820	76.2
Radio	250	0.9	217	0.9	232	0.9
TV	2 431	8.8	2 059	8.5	2 256	9.1
Cinemas	60	0.2	53	0.2	59	0.2
Printed matter	6 705	24.3	6 067	25.0	5 799	23.5
Sports sponsorship	1 258	4.6	1 104	4.5	1 196	4.8
Outdoor advertising	516	1.9	491	2.0	499	2.0
Internet	2 926	10.6	3 030	12.5	3 484	14.1
Exhibitions and conferences
Commercial articles	624	2.2	547	2.2	557	2.3
Costs for administration and production	4 927	17.8	4 567	18.8	4 738	19.2

Note: Advertising expenditure is calculated at factor prices, i.e. the price the purchaser of an advertisement pays, excluding taxes.

Source: *The advertising expenditure survey in Denmark 2010*, Danish Audit Bureau of Circulation

www.do.dk

Table 99 Activity rates by education institution. 2010

	graduation years 1999-2008		
	All sexes	Female	Male
All education institutions	88,0	85,7	91,1
Aarhus School of Architecture	86.4	82.2	91.1
The Royal Danish Academy of Fine Arts, School of Architecture	85.8	83.3	88.5
The Danish Design School	85.9	84.8	88.6
Glass and Ceramic School Bornholm	83.2	81.6	90,0
Kolding School of Design	85.1	82,0	94.3
The Royal Danish Academy of Music	87.8	82.6	92.5
Rhythmic Music Conservatory	90.5	88,0	91.4
The Royal Academy of Music, Aarhus	89.2	86.3	91.6
Academy of Music, Aalborg	98,0	96.8	98.8
Carl Nielsen Academy of Music, Odense	90.5	91.2	90,0
Academy of Music and Music Communication, Esbjerg	90.5	89.7	91.2
The Danish National School of Theatre and Contemporary Dance	86.5	80.7	92.8
School of Acting, Odense Theatre	87.3	85.3	..
School of Acting, Aarhus Theatre	93.2	91.4	94.9
The Royal Danish Academy of Fine Arts, Schools of Visual Arts	81.7	78.9	84.3
The National Film School of Denmark	86.7	79.3	91.7
The Royal Danish Academy of Fine Arts, School of Conservation	90,0	90.3	88.9
The Royal School of Library and Information Science	92.6	91.9	94.6

www.statbank.dk/kubesk2

Table 100 Public Funding for cultural purposes. 2011

	Sports and recreation	Cultural and natural heritage	Media, Library and Literature	Performing Arts and Music	Visual arts and design	Other cultural activities
	DKK mio.					
Total public funding	3 447	1 819	8 718	2 892	486	2 746
Municipalities	2 577	567	2 800	940	...	1 954
Total state funding	871	1 252	5 918	1 952	486	792
National Budget	30	1 236	1 744	1 876	473	693
Lotto Funds	841	16	34	76	14	99
Licence Fee - Public Service Broadcasting	4 140

www.statbank.dk/bevil02

Table 101 The Danish Arts Foundation. 2010

	3-year scholarships	Lump sum grants	Competitions and prizes	Purchases	Other grants	Total
	DKK thousands					
Total	23 520	42 152	2 025	3 729	20 140	91 566
Visual arts	10 080	5 954	800	3 729	11 683	32 246
Literature	5 880	9 594	825	-	-	16 299
Contemporary music	840	3 880	400	-	485	5 605
Classical music	840	1 642	-	-	3 201	5 683
Common music	-	1 230	-	-	1 373	2 603
Applied arts and designing	3 360	7 814	-	-	943	12 117
Architecture	1 680	5 433	-	-	1 365	8 478
Film and theatre	840	6 605	-	-	1 090	8 535

Source: Annual report of the Danish Arts Foundation

Table 102 National Church divisions. 2012

1 January	Church divisions			
	Churches	Vicars	Deaneries	Parishes
	number			
All Denmark	2 340	2 067	104	2 192
København Diocese	119	214	9	103
Helsingør Diocese	163	252	13	147
Roskilde Diocese	339	268	13	318
Lolland-Falster Diocese	109	59	4	104
Fyn Diocese	243	190	11	232
Haderslev Diocese	185	192	7	173
Ribe Diocese	212	159	8	202
Aarhus Diocese	355	321	14	332
Viborg Diocese	289	189	11	276
Aalborg Diocese	326	223	14	305

Source: Ministry of Ecclesiastical Affairs

Table 103 Religious ceremonies at the National Church. 2011

	Baptisms as per cent of children born in 2011	Confirmations in 2011 as per cent of 14-15 year-olds 1 January 2012	Church funerals as per cent of all deaths 2011
	per cent		
	All Denmark	79.2	73.0
Copenhagen Diocese	47.9	45.3	76.5
Helsingør Diocese	74.2	61.3	83.2
Roskilde Diocese	93.2	73.8	89.1
Lolland-Falster Diocese	94.8	81.2	86.7
Fyn Diocese	86.6	80.2	92.0
Haderslev Diocese	90.2	81.1	92.4
Ribe Diocese	97.2	80.4	94.2
Aarhus Diocese	80.4	76.3	92.8
Viborg Diocese	93.1	85.7	96.0
Aalborg Diocese	95.6	83.0	95.0

Source: Ministry of Ecclesiastical Affairs

www.statbank.dk/km44**Table 104 Membership of the National Church. 2012**

1 January	National Church members as percentage of population							National Church members thousands
	All Denmark			Dioceses of residence				
	Males	Females	Total	Copenhagen	Helsingør, Roskilde and Lolland-Falster	Funen	Jutland	
	per cent							
Total	77.9	81.7	79.8	62.5	77.9	83.8	85.4	4 454
Age:								
0-4 years	66.7	66.9	66.8	42.7	64.5	71.7	75.6	213
5-9 years	75.7	76.1	75.9	49.5	73.1	79.3	83.3	249
10-14 years	79.3	79.9	79.6	53.3	76.5	83.2	86.3	270
15-19 years	82.1	83.5	82.8	60.6	80.3	86.0	88.0	297
20-29 years	72.5	74.5	73.5	62.8	70.3	78.4	79.9	488
30-39 years	73.2	76.8	75.0	59.4	72.8	80.9	82.2	537
40-49 years	77.7	82.8	80.2	64.0	78.8	84.2	84.9	654
50-59 years	78.8	83.8	81.3	65.9	79.1	83.9	85.7	586
60-69 years	82.6	87.8	85.2	70.6	82.7	87.9	89.7	589
70-79 years	88.0	91.7	90.0	79.3	87.6	92.1	93.4	358
80 years +	91.3	93.8	92.9	87.1	91.2	94.5	95.1	214

www.statbank.dk/km55