

External trade

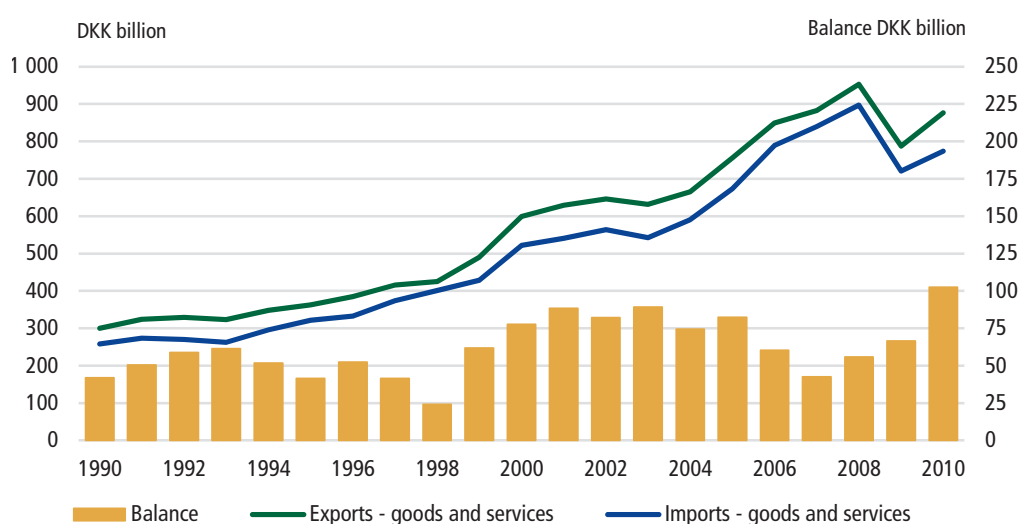
1

Developments in Denmark's total external trade

External trade surplus

During the last 20 years, Denmark's total exports of goods and services have been higher than total imports of goods and services and thereby giving rise to a positive trade balance over the entire period. From 1990 to 2008, the average increase in imports was 0.5 percentage point higher than exports, but in the wake of the global financial crisis in 2008, the fall in imports was greater than the fall in exports. The relatively sharp fall in imports after 2008 resulted in a record high trade balance of DKK 102.4 bn. in 2010.

Figure 1 Foreign trade in goods and services



www.statistikbanken.dk/bet3 og www.statistikbanken.dk/bop3

For definitional reasons, the statistics on external trade in goods and external trade in services, respectively, cannot be directly aggregated, and consequently the concept of goods from the balance of payments statistics¹ is used in the above figure. In table 342a the transition from the concept of goods used in the external trade statistics to the concept of goods used in the balance of payments statistics can be seen, where adjustments are, e.g. made with respect to bunkering and provisioning abroad, repairs and freight.

¹ See more about the balance of payments statistics in the chapter on National accounts and balance of payments

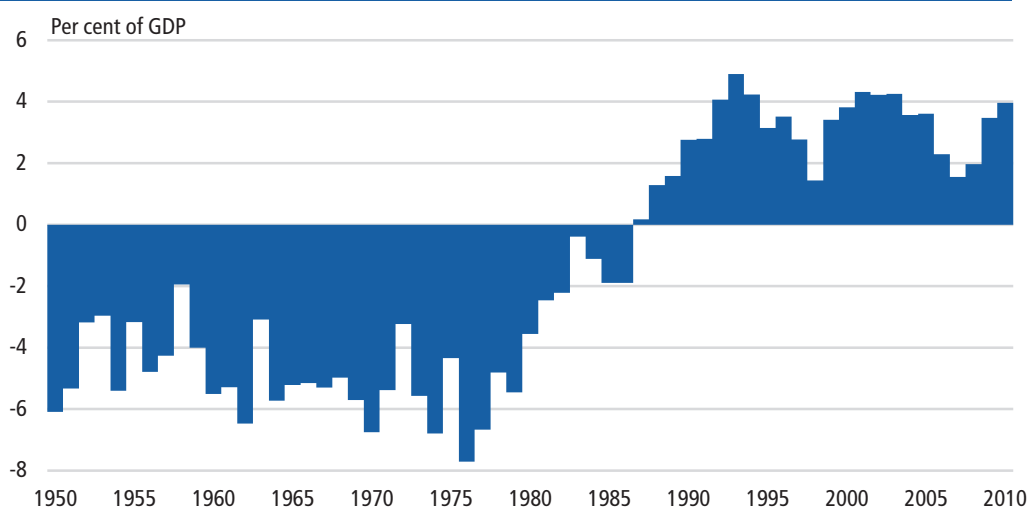
Denmark's external trade in goods

External trade surplus for 24 years in a row

After the Second World War, Denmark's foreign trade can be characterised by two distinct periods. In the early period, Denmark constantly had deficits on the balance of trade.

The recent period has been an era of constant surplus, starting with the year 1987. The balance of trade is the difference between exports and imports of goods.

Figure 2 Balance of trade



www.statistikbanken.dk/nat01, sitc5r3y og sitc5r4y

Between 1950 and 1986, the annual deficit on the balance of trade averaged 4.4 per cent of gross domestic product (GDP). The average surplus in the recent period (including 2010) is 3.0 per cent of GDP.

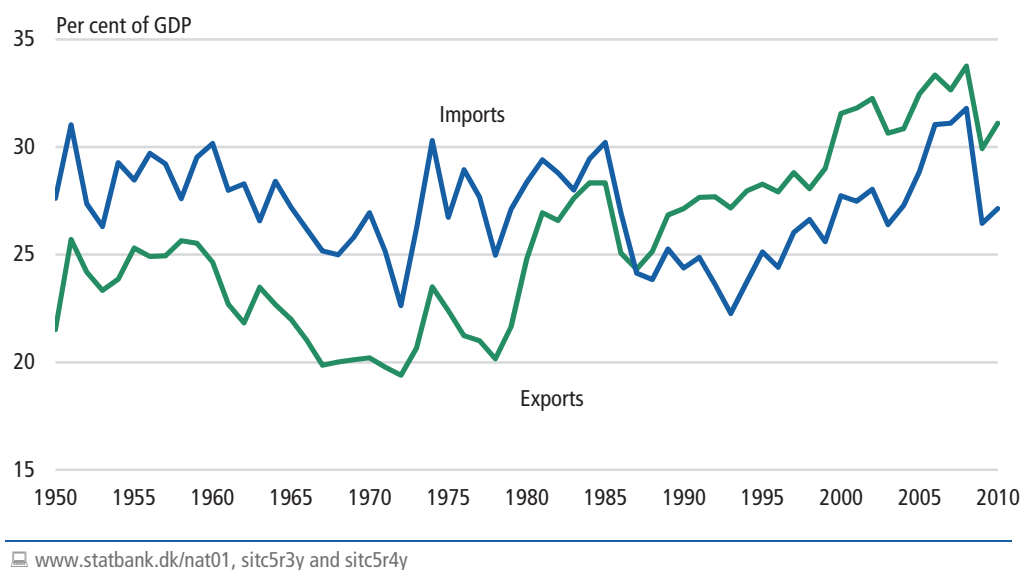
From the early 1950s, imports and exports each accounted for roughly one-fourth of GDP. In recent years this share has risen to nearly one-third.

Among the factors affecting developments in the post-war period was the increase in raw material prices resulting from the Korean War in the early 1950s. This implied that imports' and exports' percentage of GDP rose sharply. The two oil crises in the 1970s also resulted in soaring import prices.

Exports as a percentage of GDP rose steeply from the late 1970s until the mid-1980s. Since 1987, exports have had a larger share of GDP than imports – a development that has made a positive contribution to GDP growth.

During the international financial crisis in 2008 and 2009, both imports and exports dropped sharply, so the trade balance surplus was preserved.

Figure 3 Imports and exports



2

Denmark's trading partners

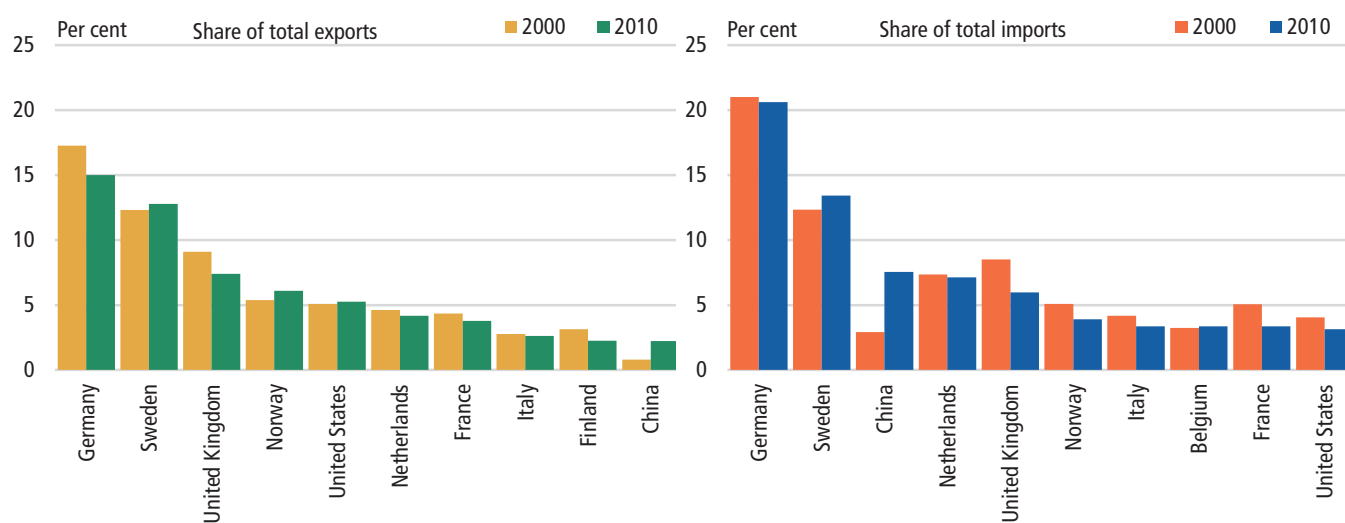
Geography is a major factor

Denmark's largest trading partners are geographically close to Denmark. In 2010, the other 26 EU countries accounted for 68 per cent of the total Danish external trade and Norway another 5 per cent.

Countries of export and import

Danish external trade is concentrated on a few dominant trading partners. The 10 largest export markets accounted for 62 per cent of total Danish exports in 2010, while 10 countries supplied 72 per cent of total imports into Denmark.

Figure 4 Top 10 export and import countries



Germany is Denmark's largest trading partner, but in recent years exports to Germany have been declining relatively. In 2010, Germany accounted for 21 per cent of Denmark's imports and 15 per cent of Denmark's exports. 10 years earlier (2000) the corresponding figures were 21 per cent and 17 per cent.

In recent years, China has been the fastest climber on the list of major trading partners. In 2010, China was the third largest supplier of goods to Denmark, accounting for 8 per cent of all Danish imports.

Trade is not so brisk in the opposite direction. Roughly 2 per cent of Danish exports go to China, a fact which puts China in the 10th place among Denmark's export markets.

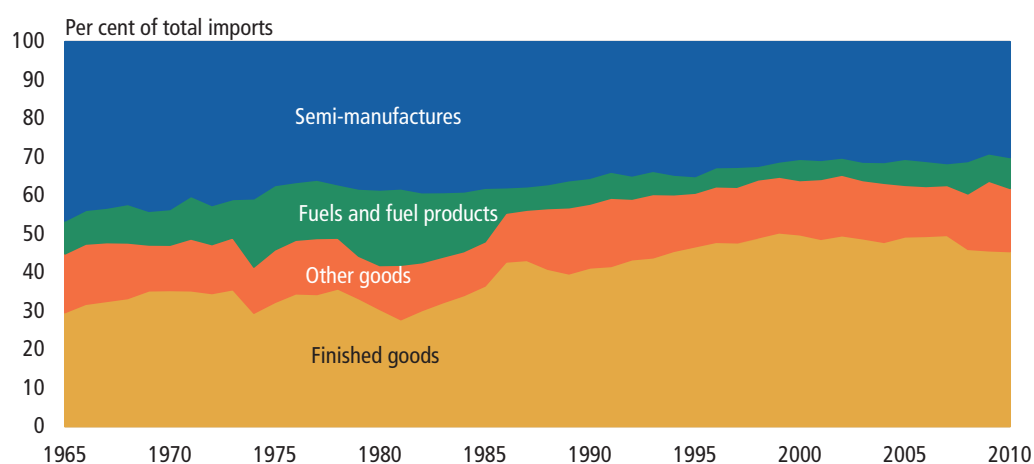
3

External trade analysed by commodity categories

Finished goods account for half of total imports

Since 1960, finished goods have made up an ever larger share of Danish imports, now accounting for half of total imports. During the same period, imports of semi-manufactured products have declined from one-half to one-third of total imports.

Figure 5 Imports analysed by commodity categories

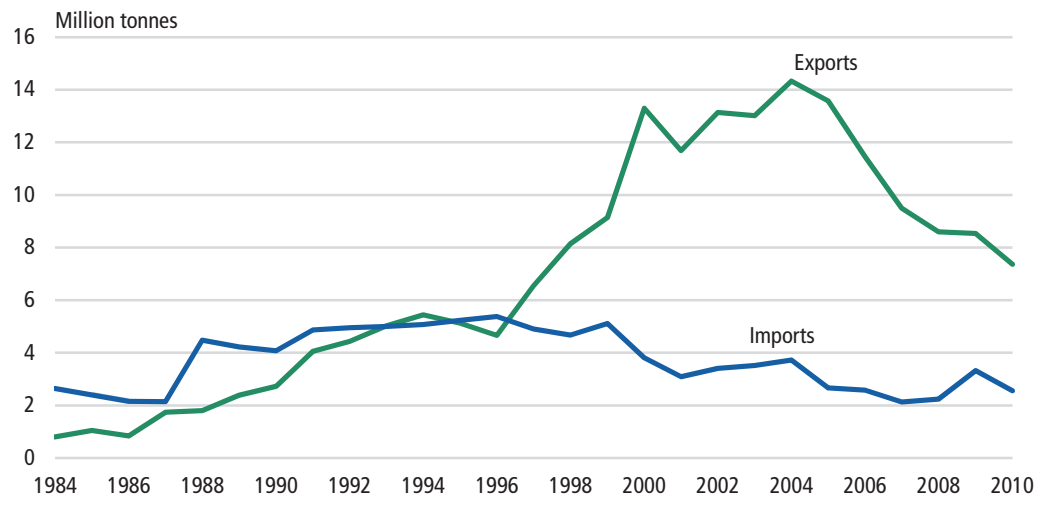


Denmark is a net exporter of oil

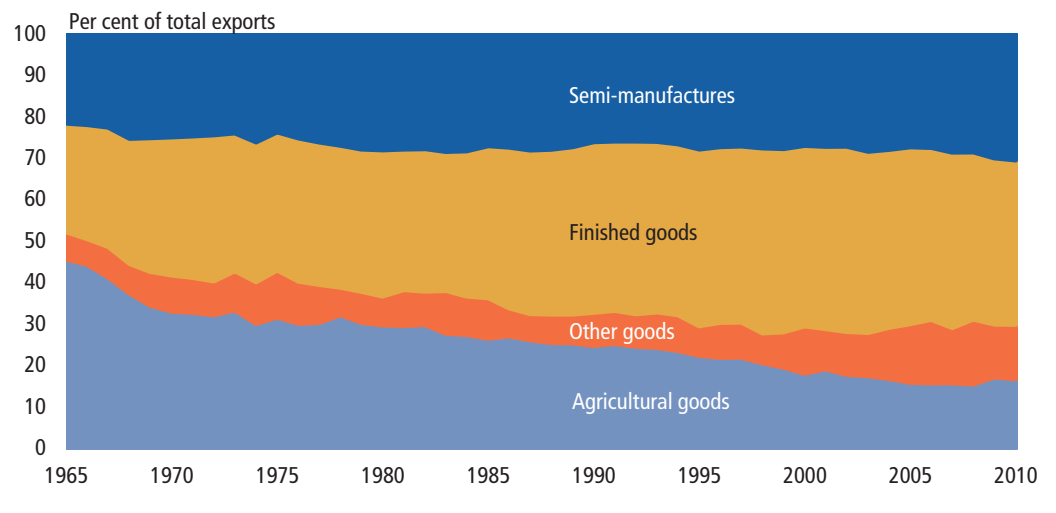
Until the first oil crisis in 1973, imports of crude oil and oil-based products were stable at around 10 per cent of total imports. Then an increase in oil prices pushed the value ratio up to around 20 per cent until the mid-1980s.

Subsequently, the value of imports of crude oil and oil-based products has fallen, so that these goods now account for about 7 per cent of total imports. Oil exports, on the other hand, increased sharply from 1997 to 2004, after which they have dropped substantially.

In 2010, exports of crude oil and oil-based products accounted for just under 8 per cent of total exports. Still, in volume terms, oil exports are three times as large as oil imports. These developments reflect the scale of energy production in the North Sea, which has made Denmark a net exporter of oil since 1997.

Figure 6 Exports and imports of oil**Semi-manufactured and finished goods dominate exports**

Since the beginning of the 1960s, the relative importance of agricultural exports has declined. Sales of agricultural products (incl. fish) now account for only 17 per cent of total exports. Conversely, over the same period, finished goods have doubled to 40 per cent of total exports, and semi-manufactures have risen from around 20 per cent in 1960 to 30 per cent of total exports of goods most recently.

Figure 7 Exports analysed by commodity categories

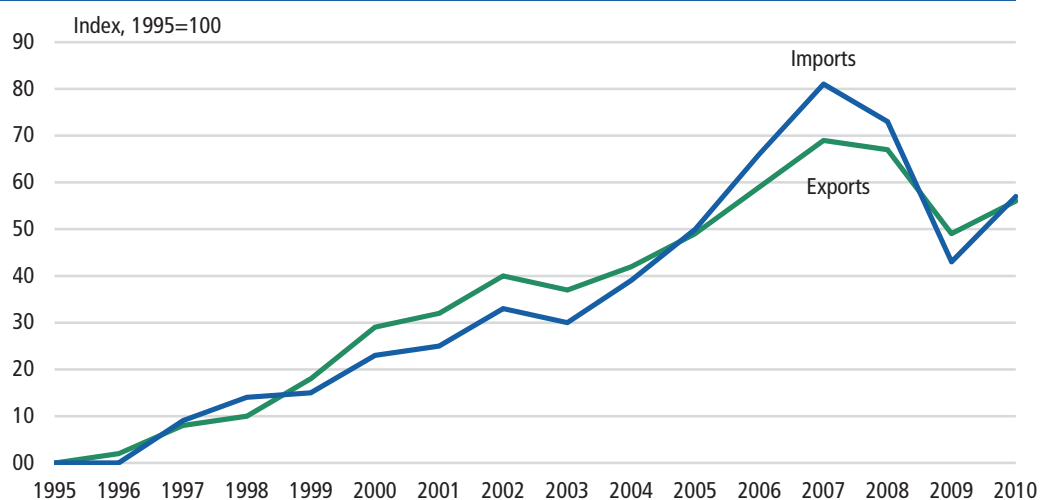
4

Quantities, unit values and the terms of trade

Import and export quantities on the rise

In terms of volume (quantities), Danish imports and exports increased quite steeply until 2007 – the only exception being a slight decline in 2003. In 2008, both import and export volumes dropped slightly, while 2009 was affected by a strong decline of historical dimensions, followed by a rebound in 2010 when import volumes were up 10 per cent and export volumes were up 5 per cent on the year before.

Figure 8 Quantity index of imports and exports

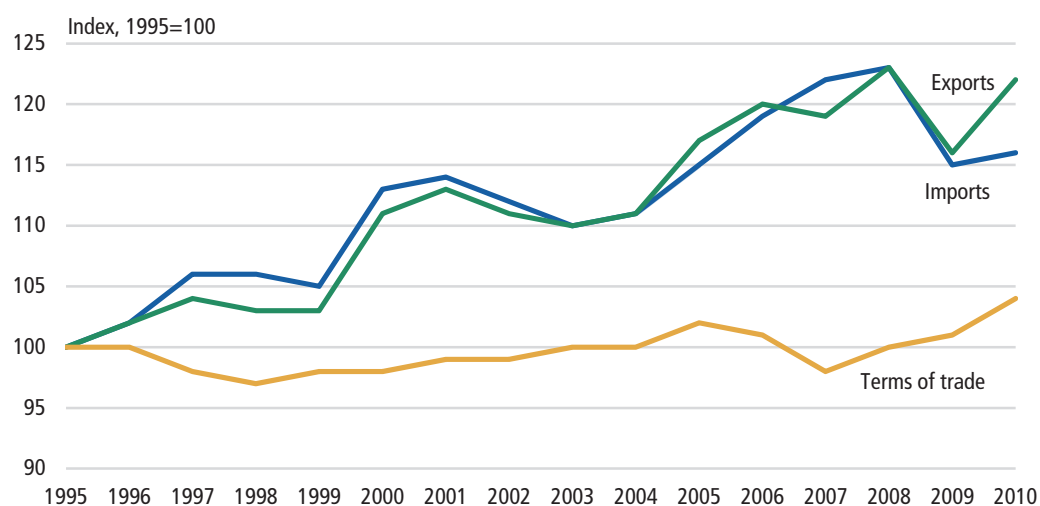


www.statbank.dk/konj42 and bec42

Recent rise in export prices, notably for energy products

Since 1995 prices of imported and exported goods have moved largely in parallel – a development illustrated by the unit value index. Until 2008 prices of imports as well as exports followed the same increase, and they both decreased steeply in 2009. In 2010, however, the unit value index for exports rose more than the unit value index for imports, as higher energy prices boosted Danish exports.

Figure 9 Index of unit values for imports and exports and the terms of trade



www.statbank.dk/konj42, bec42 and byt22

In most years the parallel development of prices for imports and exports means that Denmark's terms of trade (i.e., the ratio of the export unit value index to the import unit value index) remain fairly constant.

An increase in Denmark's terms of trade means that either prices for exports increase more than prices for imports or prices for imports decrease more than prices for exports.

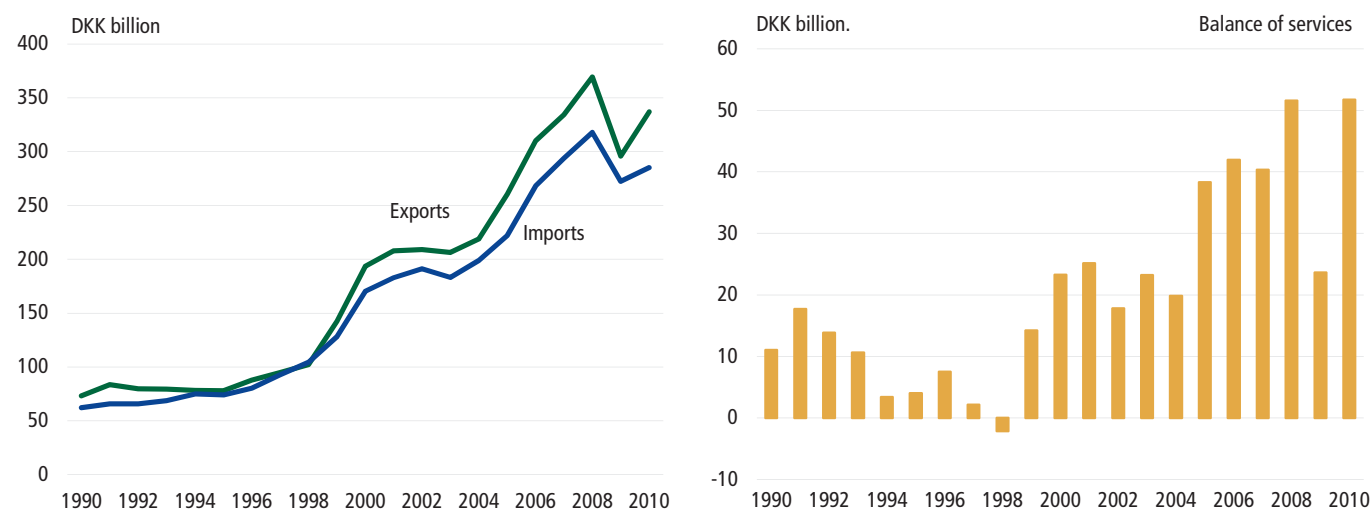
3

External trade in services

Trade in services has increased sharply during the last 20 years

During the period 1990 to 2010, trade in services with abroad more than quadrupled, from exports of DKK 73.3 bn. in 1990 to DKK 336.8 bn. in 2010, and imports of DKK 62.2 bn. in 1990 to DKK 285.1 bn. in 2010. From 1998 to 2008, when trade in services really increased sharply, exports rose annually by 13.7 pct. and imports by 11.8 pct., while the development in exports and imports of goods accounted for approximately half of the figure in the same period. The prime mover of this increase was primarily accounted for by sea transport, but also other types of transport, provision of goods and consultancy services. In 2009 exports as well as imports declined considerably in connection with the global financial recession, but in 2010 there were already indications that especially exports were on the increase.

Figure 10 External trade in services



www.statistikbanken.dk/bet3 og bop3

From 1990 to 1998, the surplus on the balance of services was steadily declining, and had been converted into a deficit of DKK 2.1 bn. in 1998, due to especially an increased deficit on tourism. The period after 1998 experienced an increasing surplus until 2008, which was driven by the transport sector, where the surplus reached DKK 51.6 bn., which was, however, exceeded by a record high surplus of DKK 51.7 bn. in 2010.

After 2008, the global financial crisis made great inroads into Danish trade in services, and particularly exports declined substantially, causing a fall in the surplus reaching DKK 23.6 bn. The greatest falls were accounted for by the transport sector, where especially sea transport experienced a considerable fall.

Developments in trading partners during the last 5 years

The period 2005 to 2010 showed a general tendency that the market share in traditional exports markets, e.g. Germany, Norway, UK and Japan was declining, while the share was increasing in new markets. However, the market share has increased in some export markets, especially the USA and Sweden.

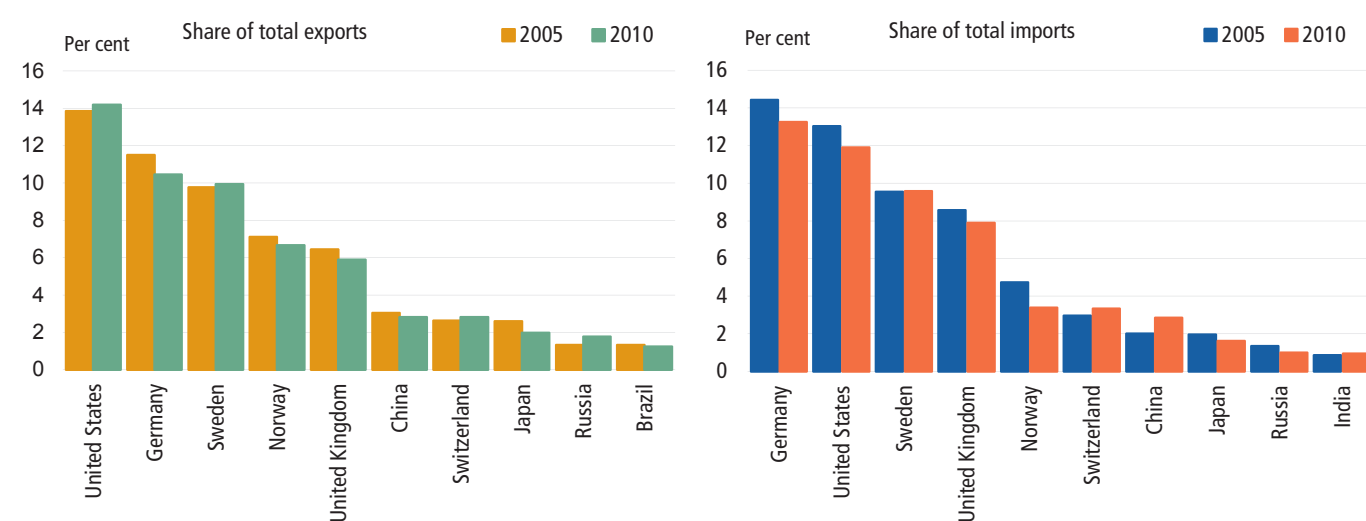
There is an even more distinct picture with regard to imports, where almost all countries have lost, and particularly Germany, USA, UK and Norway, considerable shares to other countries. In contrast, especially China, but also Switzerland has increased their share of Danish imports. In 2010, Sweden maintained the same share of imports, compared to 5 years earlier.

The composition of the Danish trade in services

The USA was Denmark's most important trading partner in both 2005 and 2010 with regard to exports, which was mainly due to purchases of services within sea transport by American customers. The circumstance that the USA widely accounts for sea transport services does not necessarily reflect that the physical sea transport takes place to and from the USA. The essence of the statistics on trade in services is that the Danish shipping companies carry goods on behalf of American customers.

Germany was Denmark's most important trading partner in both 2005 and 2010 with regard imports. Sea transport services are also dominant in relation to Germany, but also travels and road transport play a very important role in Danish imports of services from Germany.

Figure 11 External trade in services, selection of countries



www.statistikbanken.dk/bop3

The USA followed by Sweden and Germany are Denmark's most important trading partners with regard to trade in services. For Sweden and Germany, sea transport also plays a considerable role, but trade with these two countries also covers a wide range of services, e.g. air and road transport, travels and other business services. It can generally be deduced that if sea transport is disregarded, markets geographically close to Denmark play an important role in Danish trade in services – which is also precisely the case with regard to trade in goods.

Table 335 External trade in goods, main figures

	Exports		Imports		Trade balance	
	2009	2010*	2009	2010*	2009	2010*
	DKK mio.					
Total	495 577	543 487	437 998	474 295	57 579	69 192
EMU, total	195 460	206 129	200 178	213 577	-4 718	-7 448
Belgium	8 033	7 720	15 145	16 012	-7 112	-8 293
Cyprus	426	438	104	149	322	290
Finland	11 845	13 198	7 548	8 191	4 297	5 007
France and Monaco	20 631	22 710	15 203	15 909	5 428	6 801
Greece	3 557	3 161	1 060	1 136	2 497	2 025
Ireland	5 839	5 848	4 787	5 932	1 052	-84
Italy	14 992	15 531	15 274	16 211	-283	-680
Luxembourg	260	302	1 349	813	-1 089	-511
Malta	632	268	127	72	505	196
Netherlands	22 861	24 479	30 796	34 013	-7 935	-9 534
Portugal	2 191	2 102	2 045	2 245	146	-142
Slovakia	1 527	1 637	2 303	1 963	-776	-326
Slovenia	551	534	993	1 147	-442	-614
Spain	12 847	12 716	6 511	6 989	6 336	5 727
Germany	85 607	91 528	92 690	98 192	-7 082	-6 665
Austria	3 661	3 958	4 242	4 602	-581	-644
Other EU countries	133 748	145 161	107 507	122 469	26 240	22 693
Bulgaria	1 184	555	191	380	993	175
Czech Republic	4 455	5 068	4 694	5 530	-240	-462
Estonia	1 385	1 231	1 290	1 358	95	-127
Latvia	1 147	1 252	1 840	1 822	-692	-570
Lithuania	1 698	1 842	2 672	3 022	-974	-1 180
Poland	12 228	13 221	11 345	14 113	883	-892
Romania	1 708	1 644	530	803	1 179	841
United Kingdom	41 970	42 511	24 297	28 324	17 673	14 187
Sweden	63 666	73 288	57 758	63 656	5 908	9 632
Hungary	2 826	3 094	2 890	3 461	-65	-366
EU country not specified	1 480	1 455	0	0	1 480	1 455
Non-EU countries, total	166 369	192 197	130 313	138 249	36 056	53 948
Argentina	748	854	2 662	2 879	-1 914	-2 025
Australia	4 768	4 762	697	749	4 072	4 013
Brazil	2 141	3 193	1 724	2 640	417	553
Canada	4 931	6 815	2 641	2 328	2 290	4 487
United Arab Emirates	1 693	2 201	248	632	1 445	1 569
Greenland	2 764	2 955	2 083	2 358	681	597
Hong Kong	4 845	8 046	1 105	1 047	3 740	6 999
India	2 075	2 702	3 683	4 118	-1 608	-1 417
Japan	10 038	10 651	2 283	2 211	7 755	8 440
China	11 475	13 404	28 780	35 986	-17 305	-22 582
Norway	31 423	34 245	23 228	18 612	8 195	15 633
Russian Federation	8 267	9 718	4 755	6 565	3 512	3 154
Switzerland	4 715	5 085	4 722	4 747	-6	338
Singapore	4 992	2 172	8 324	3 426	-3 333	-1 255
South Africa	1 249	1 397	892	739	357	658
Korea, Republic of	3 103	3 865	2 929	2 643	174	1 222
Taiwan	1 310	1 510	2 027	2 753	-716	-1 243
Thailand	1 142	1 389	2 904	4 256	-1 761	-2 867
Tyrkey	2 880	3 753	4 022	4 441	-1 142	-689
United States	31 019	35 624	15 176	15 147	15 843	20 477
Other countries and not stated	30 791	37 855	15 430	19 971	15 361	17 883

www.statbank.dk/sitc2r4y

Table 336 (page 1 of 5) External trade in goods, by country

	Exports		Imports		Trade balance	
	2009	2010*	2009	2010*	2009	2010*
	— DKK thousands —					
Total	495 577 253	543 486 918	437 998 467	474 294 674	57 578 786	69 192 244
Europe, total¹	383 513 755	411 833 648	347 344 582	373 530 913	36 169 173	38 302 735
Albania	41 054	64 256	2 749	2 924	38 305	61 332
Andorra	6 983	5 143	1 235	634	5 748	4 509
Belgium	8 033 335	7 719 723	15 145 199	16 012 266	-7 111 864	-8 292 543
Bosnia-Herzegovina	145 477	129 419	26 021	37 105	119 456	92 314
Bulgaria	1 184 087	554 872	191 109	379 935	992 978	174 937
Cyprus	426 209	438 357	104 020	148 538	322 189	289 819
Estonia	1 385 127	1 231 014	1 289 875	1 357 888	95 252	-126 874
Finland	11 844 592	13 198 007	7 547 910	8 191 417	4 296 682	5 006 590
France and Monaco	20 631 148	22 710 227	15 203 058	15 909 452	5 428 090	6 800 775
Faroe Islands ¹	1 905 211	2 324 307	797 271	1 055 059	1 107 940	1 269 248
Gibraltar	289 265	89 232	253	1 065	289 012	88 167
Greenland ²	2 763 989	2 954 941	2 082 578	2 358 368	681 411	596 573
Greece	3 556 741	3 161 250	1 060 056	1 136 145	2 496 685	2 025 105
Belarus	312 998	377 976	498 662	336 645	-185 664	41 331
Ireland	5 839 178	5 847 617	4 787 236	5 931 744	1 051 942	-84 127
Iceland	1 618 584	1 936 934	464 227	569 082	1 154 357	1 367 852
Italy	14 991 943	15 530 799	15 274 444	16 210 979	-282 501	-680 180
Kosovo	26 202	31 755	358	171	25 844	31 584
Croatia	741 673	660 917	139 700	179 237	601 973	481 680
Latvia	1 147 407	1 252 449	1 839 711	1 822 085	-692 304	-569 636
Liechtenstein	8 935	9 432	49 041	12 139	-40 106	-2 707
Lithuania	1 697 725	1 841 573	2 672 178	3 021 668	-974 453	-1 180 095
Luxembourg	259 915	301 777	1 348 643	812 946	-1 088 728	-511 169
Macedonia	120 188	148 566	11 521	26 098	108 667	122 468
Malta	631 677	267 511	126 988	71 670	504 689	195 841
Moldova	52 864	65 215	322	664	52 542	64 551
Montenegro	6 738	11 768	5 478	64	1 260	11 704
Netherlands	22 860 888	24 479 211	30 796 110	34 013 260	-7 935 222	-9 534 049
Norway	31 423 359	34 245 321	23 228 030	18 612 142	8 195 329	15 633 179
Poland	12 228 393	13 221 008	11 345 106	14 112 917	883 287	-891 909
Portugal	2 190 740	2 102 444	2 045 184	2 244 760	145 556	-142 316
Romania	1 708 453	1 644 085	529 532	803 140	1 178 921	840 945
Russian Federation	8 266 830	9 718 305	4 754 615	6 564 599	3 512 215	3 153 706
San Marino	8 133	10 690	1 351	1 769	6 782	8 921
Switzerland	4 715 235	5 085 303	4 721 622	4 747 355	-6 387	337 948
Serbia	448 460	475 627	61 500	97 513	386 960	378 114
Slovakia	1 527 278	1 637 258	2 303 259	1 963 303	-775 981	-326 045
Slovenia	550 932	533 794	992 654	1 147 478	-441 722	-613 684
Spain	12 847 482	12 715 685	6 511 264	6 988 847	6 336 218	5 726 838
United Kingdom	41 970 097	42 511 141	24 296 723	28 323 970	17 673 374	14 187 171
Sweden	63 666 059	73 287 688	57 758 332	63 656 109	5 907 727	9 631 579
Czech Republic	4 454 890	5 068 301	4 694 486	5 530 243	-239 596	-461 942
Turkey	2 879 636	3 752 765	4 021 733	4 441 300	-1 142 097	-688 535
Germany	85 607 037	91 527 628	92 689 523	98 192 377	-7 082 486	-6 664 749
Ukraine	1 282 458	1 400 711	873 381	799 827	409 077	600 884
Hungary	2 825 516	3 094 142	2 890 379	3 460 599	-64 863	-366 457
Vatican State	5 200	-	4	21	5 196	-21
Austria	3 661 379	3 957 542	4 242 462	4 601 711	-581 083	-644 169
Not classified EU country	1 480 044	1 454 903	67	53	1 479 977	1 454 850

¹ Faroe Islands included in Europe. ² Greenland included in America.

Table 336 (page 2 of 5) External trade in goods, by country

	Exports		Imports		Trade balance	
	2009	2010*	2009	2010*	2009	2010*
	DKK thousands					
Africa, total	5 874 314	6 591 362	1 757 344	3 352 881	4 116 970	3 238 481
Algeria	924 959	693 363	12 872	553 173	912 087	140 190
Angola	71 921	140 370	405	825	71 516	139 545
Benin	11 386	17 574	23 979	37 608	-12 593	-20 034
Botswana	14 539	5 604	150	323	14 389	5 281
British Indian Ocean Territory	1 804	879	-	-	1 804	879
Burkina Faso	14 314	16 200	148 406	97 506	-134 092	-81 306
Burundi	6 923	12 863	3 159	4 301	3 764	8 562
Cameroon	24 091	32 926	7 701	11 815	16 390	21 111
Central African Republic	4 004	5 709	34	71	3 970	5 638
Ceuta	2 929	4 515	48	74	2 881	4 441
Comoros	773	895	-	21	773	874
Congo	11 709	20 800	3 338	7 325	8 371	13 475
Congo (Democratic Republic)	27 786	25 690	3 398	703	24 388	24 987
Djibouti	6 804	23 939	5 178	8 417	1 626	15 522
Egypt	1 299 077	1 431 572	94 297	128 339	1 204 780	1 303 233
Côte d'Ivoire	45 464	46 969	7 222	8 143	38 242	38 826
Eritrea	11 606	5 398	52	81	11 554	5 317
Ethiopia	83 836	60 969	14 061	8 889	69 775	52 080
Gabon	14 186	19 985	2 899	5 000	11 287	14 985
Gambia	22 939	30 302	5	43	22 934	30 259
Ghana	103 261	152 341	42 210	13 210	61 051	139 131
Guinea	9 146	37 811	46	504 727	9 100	-466 916
Guinea-Bissau	2 034	3 499	7	25	2 027	3 474
Cap Verde	5 652	5 753	45	319	5 607	5 434
Kenya	191 743	170 661	12 124	9 001	179 619	161 660
Lesotho	997	135	-	4	997	131
Liberia	40 002	52 654	420	337 820	39 582	-285 166
Libya	199 877	269 864	174 272	348 071	25 605	-78 207
Madagascar	28 409	4 899	12 627	13 881	15 782	-8 982
Malawi	20 496	28 550	27 913	18 981	-7 417	9 569
Mali	12 638	10 826	12 030	402	608	10 424
Morocco	318 852	396 544	50 442	149 230	268 410	247 314
Mauritania	6 263	32 597	13	341	6 250	32 256
Mauritius	47 341	79 937	13 967	11 168	33 374	68 769
Mayotte	398	366	2	177	396	189
Melilla	6 612	9 565	-	-	6 612	9 565
Mozambique	12 182	18 600	3 145	4 742	9 037	13 858
Namibia	32 229	38 729	30 543	36 198	1 686	2 531
Niger	6 984	27 225	6	77	6 978	27 148
Nigeria	422 637	545 850	668	9 925	421 969	535 925
Rwanda	55 128	28 402	409	451	54 719	27 951
Sao Tome and Principe	325	864	-	5	325	859
Senegal	37 711	110 545	965	1 676	36 746	108 869
Seychelles	12 461	18 511	13 499	17 046	-1 038	1 465
Sierra Leone	13 302	11 404	71	8 330	13 231	3 074
Somalia	474	2 387	5	4	469	2 383
Saint Helena, etc.	-	12	1 609	8	-1 609	4
Sudan	68 940	96 054	1 787	3 303	67 153	92 751
Swaziland	2 133	1 424	53	2 090	2 080	-666
South Africa	1 248 649	1 397 408	891 985	739 249	356 664	658 159
Tanzania	58 030	78 430	33 906	38 134	24 124	40 296
Chad	24 932	20 507	27	26	24 905	20 481
Togo	16 698	16 403	521	1 605	16 177	14 798
Tunisia	159 467	170 928	52 252	162 119	107 215	8 809
Uganda	47 233	80 911	22 911	36 162	24 322	44 749
Zambia	20 863	11 453	13 126	8 484	7 737	2 969
Zimbabwe	10 011	33 032	15 335	2 952	-5 324	30 080
Equatorial Guinea	29 154	29 759	1 199	281	27 955	29 478

Table 336 (page 3 of 5) External trade in goods, by country

	Exports		Imports		Trade balance	
	2009	2010*	2009	2010*	2009	2010*
	DKK thousands					
America, total	48 072 396	58 595 286	28 620 969	29 610 642	19 451 427	28 984 644
Of which: North America ¹	38 713 933	45 394 536	19 899 669	19 833 341	18 814 264	25 561 195
South and Central America	9 358 463	13 200 750	8 721 300	9 777 301	637 163	3 423 449
Virgin Islands (U.S.)	6 408	121 662	131	375	6 277	121 287
Anguilla	435	550	4	1	431	549
Antigua and Barbuda	19 122	17 286	3 277	5 309	15 845	11 977
Argentina	747 828	854 229	2 662 137	2 878 773	-1 914 309	-2 024 544
Aruba	297 415	13 099	48 791	1 212	248 624	11 887
Bahamas	190 281	253 068	746	899	189 535	252 169
Barbados	13 789	14 967	8 482	3 200	5 307	11 767
Belize	10 521	15 016	1 664	1 952	8 857	13 064
Bermuda	15 822	16 071	195	1 534	15 627	14 537
Bolivia	60 296	78 854	6 528	5 973	53 768	72 881
Brazil	2 140 665	3 192 650	1 723 968	2 639 817	416 697	552 833
Virgin Islands (British)	8 015	5 851	159	901	7 856	4 950
Canada	4 931 290	6 815 496	2 641 325	2 328 080	2 289 965	4 487 416
Cayman Islands	72 226	7 630	1 688	14 454	70 538	-6 824
Chile	700 546	725 166	848 197	780 924	-147 651	-55 758
Colombia	235 812	375 741	1 248 000	787 985	-1 012 188	-412 244
Costa Rica	71 856	103 592	14 712	15 984	57 144	87 608
Cuba	108 511	98 417	155 965	278 838	-47 454	-180 421
Dominica	12 790	6 658	5	44	12 785	6 614
Dominican Republic	439 332	451 468	3 166	5 580	436 166	445 888
Ecuador	88 287	104 609	120 784	104 039	-32 497	570
El Salvador	36 812	53 793	557	688	36 255	53 105
Falkland Islands	183	624	545	2	-362	622
Grenada	6 632	6 450	-	183	6 632	6 267
Guatemala	41 316	40 197	10 846	8 440	30 470	31 757
Guyana	7 035	7 850	35	137	7 000	7 713
Haiti	23 562	44 786	234	427	23 328	44 359
Honduras	44 738	49 613	10 750	15 235	33 988	34 378
Jamaica	22 114	55 046	2 560	1 712	19 554	53 334
Mexico	1 499 897	2 534 685	449 827	638 014	1 050 070	1 896 671
Montserrat	274	512	164	-	110	512
Netherlands Antilles	104 519	41 704	104 235	2 596	284	39 108
Nicaragua	15 525	17 925	1 662	4 111	13 863	13 814
Panama	1 320 283	2 684 928	54 292	170 845	1 265 991	2 514 083
Paraguay	12 031	20 070	27 795	13 175	-15 764	6 895
Peru	222 961	311 504	431 074	608 336	-208 113	-296 832
Saint Kitts, Nevis	14 266	42 509	5 277	17 592	8 989	24 917
Saint Lucia	2 261	3 062	53	348	2 208	2 714
Saint Pierre, etc.	114	35	4	-	110	35
Saint Vincent and Grenadines	11 819	13 665	38 806	5	-26 987	13 660
Suriname	18 323	4 189	260	680	18 063	3 509
Trinidad and Tobago	70 425	37 368	3 178	45 612	67 247	-8 244
Turks and Caicos Islands	283	523	-	55	283	468
Uruguay	241 824	382 619	53 506	70 495	188 318	312 124
United States	31 018 540	35 624 064	15 175 762	15 146 893	15 842 778	20 477 171
Venezuela	401 423	390 544	677 045	650 819	-275 622	-260 275
Asia, total	51 602 841	60 238 520	58 998 879	66 107 758	-7 396 038	-5 869 238
Afghanistan	94 638	136 630	350	29 610	94 288	107 020
Armenia	25 810	32 013	4 218	685	21 592	31 328
Azerbaijan	71 216	134 686	2 792	137	68 424	134 549
Bahrain	143 576	171 237	7 647	164 389	135 929	6 848
Bangladesh	163 275	273 903	1 096 977	1 568 129	-933 702	-1 294 226
Bhutan	866	883	526	1 269	340	-386

¹ United States, Canada, Greenland, Saint. Pierre, etc.

Table 336 (page 4 of 5) External trade in goods, by country

	Exports		Imports		Trade balance	
	2009	2010*	2009	2010*	2009	2010*
	DKK thousands					
Brunei	42 907	9 026	18 364	522	24 543	8 504
Cambodia	17 544	23 628	62 004	98 226	-44 460	-74 598
United Arab Emirates	1 693 428	2 201 110	247 930	631 815	1 445 498	1 569 295
Georgia	87 880	111 967	3 501	19 721	84 379	92 246
Hong Kong	4 844 832	8 045 816	1 104 909	1 046 842	3 739 923	6 998 974
India	2 074 836	2 701 669	3 683 312	4 118 484	-1 608 476	-1 416 815
Indonesia	503 303	808 123	1 110 226	1 246 834	-606 923	-438 711
Iraq	317 721	284 928	779	305	316 942	284 623
Iran	773 650	1 027 445	44 519	46 008	729 131	981 437
Israel	978 162	1 065 446	478 460	575 268	499 702	490 178
Japan	10 038 261	10 651 054	2 283 044	2 210 626	7 755 217	8 440 428
Jordan	245 930	413 577	6 115	12 644	239 815	400 933
Kazakhstan	297 329	340 255	247 134	679 910	50 195	-339 655
China	11 475 382	13 403 743	28 780 128	35 985 915	-17 304 746	-22 582 172
Kyrgyzstan	7 590	7 859	355	348	7 235	7 511
Kuwait	338 681	476 678	231 356	651 811	107 325	-175 133
Lao People's Democratic Republic	13 037	2 018	24 806	27 371	-11 769	-25 353
Lebanon	573 070	626 891	17 948	23 706	555 122	603 185
Macao	15 314	10 772	4 435	19 645	10 879	-8 873
Malaysia	793 724	947 569	1 200 753	1 544 997	-407 029	-597 428
Maldives	21 085	24 323	4 897	145	16 188	24 178
Mongolia	10 045	25 428	123	845	9 922	24 583
Myanmar	12 204	7 669	6 004	8 373	6 200	-704
Nepal	15 051	31 003	11 907	19 207	3 144	11 796
Korea, Democratic People's Republic	26 333	66 811	1 502	3 049	24 831	63 762
Oman	508 886	884 302	4 542	9 597	504 344	874 705
Pakistan	378 127	423 938	437 162	475 788	-59 035	-51 850
Philippines	500 922	657 681	306 761	326 813	194 161	330 868
Qatar	443 986	521 186	69 404	14 159	374 582	507 027
Saudi Arabia	2 274 809	3 196 999	31 719	98 154	2 243 090	3 098 845
Singapore	4 991 590	2 171 856	8 324 480	3 426 451	-3 332 890	-1 254 595
Sri Lanka	108 947	167 915	105 057	131 483	3 890	36 432
Korea, Republic of	3 103 055	3 864 851	2 928 915	2 642 847	174 140	1 222 004
Syria	271 773	270 814	3 615	11 175	268 158	259 639
Tajikistan	2 596	22 419	7	98	2 589	22 321
Taiwan	1 310 305	1 510 295	2 026 644	2 753 112	-716 339	-1 242 817
Thailand	1 142 245	1 389 413	2 903 604	4 256 088	-1 761 359	-2 866 675
Timor Leste	397	3 890	1 327	15	-930	3 875
Turkmenistan	16 208	32 394	212	25	15 996	32 369
Uzbekistan	34 344	68 484	786	177	33 558	68 307
West Bank/Gaza Strip	8 209	6 719	-	-	8 209	6 719
Viet Nam	579 897	748 992	1 167 445	1 224 929	-587 548	-475 937
Yemen	209 865	232 212	178	11	209 687	232 201
Oceania, total	5 921 628	6 129 698	1 276 693	1 692 480	4 644 935	4 437 218
American Samoa	124	669	67	110	57	559
Antarctica	25	157	-	-	25	157
Australia	4 768 264	4 762 082	696 631	749 367	4 071 633	4 012 715
Bouvet Islands	61	1 005	-	-	61	1 005
Cocos Islands	-	203	-	-	-	203
Cook Islands	303	396	-	51	303	345
Fiji Islands	4 466	7 744	219	132	4 247	7 612
French Southern Territories	2 181	3 314	14	-	2 167	3 314
French Polynesia	16 019	15 272	1 498	1 687	14 521	13 585
Guam	16 545	21 390	36	2	16 509	21 388
Heard Islands and McDonald Islands	820	114	-	-	820	114
Christmas Islands	5	-	-	220	5	-220

Table 336 (page 5 of 5) External trade in goods, by country

	Exports		Imports		Trade balance	
	2009	2010*	2009	2010*	2009	2010*
	DKK thousands					
Kiribati	95	243	621	722	-526	-479
Marshall Islands	159 507	65 199	37	223	159 470	64 976
Nauru	94	11	-	8	94	3
New Zealand	889 471	1 173 637	553 065	930 903	336 406	242 734
Niue	-	-	-	-	-	-
Northern Mariana Islands	14	16	24	-	-10	16
Norfolk Islands	3 909	6 178	3	-	3 906	6 178
New Caledonia	26 801	30 128	308	12	26 493	30 116
Palau	-	318	-	-	-	318
Papua New Guinea	27 041	37 425	23 435	7 651	3 606	29 774
Pitcairn	-	2 150	-	-	-	2 150
Solomon Islands	-	857	-	393	-	464
Samoa	34	60	-	-	34	60
Federated States of Micronesia	20	-	-	1	20	-1
Tokelau	109	12	628	606	-519	-594
Tonga	1 240	112	-	-	1 240	112
Tuvalu	595	175	-	363	595	-188
Wallis and Futuna	438	19	-	-	438	19
Vanuatu	3 447	615	2	-	3 445	615
United States Minor outlying islands	-	197	105	29	-105	168
Not classified non-EU country	592 319	98 404	-	-	592 319	98 404

Table 337 External trade, quantity and unit value index

	Quantity			Unit value		
	2008	2009	2010*	2008	2009	2010*
	1995=100					
Imports¹						
Imports, total (excl. ships, etc. and confidential shipments)	173	143	157	123	115	116
Intermediate goods for agriculture and horticulture	144	106	114	147	142	146
Intermediate goods for construction industry	210	157	166	110	106	103
Intermediate goods for other industries	152	119	133	119	113	111
Fuels, lubricants, and electricity	115	111	108	373	262	326
Machinery and other capital	196	161	176	104	100	100
Transport equipment	177	107	131	117	116	111
Intermediate goods for household consumption	208	187	207	111	108	108
Exports¹						
Exports, total (excl. ships, etc. and confidential shipments)	167	149	156	123	116	122
Agricultural products of animal origin	133	131	137	109	105	106
Agricultural products of vegetable origin	80	83	93	134	125	126
Canned meat and milk	77	84	93	135	114	128
Manufactured goods, total	187	164	175	107	105	107
Manufactured goods, total (excl. machinery and instruments)	179	163	172	111	107	110
Fish, crustaceans, and molluscs not processed or preserved	102	90	93	120	117	127
Fur skins, untreated	183	197	224	143	113	177
Fuels, lubricants, and electricity	173	157	151	459	324	405
Terms of trade	•	•	•	100	101	104

Note: The classification *other goods* has been omitted from the table, but it is included in the totals.

www.statbank.dk/dk/bec42, konj42 and byt22

¹ Excl. ships of over 250 GT, aircraft, drilling rigs and production platforms.

Table 338	Imports by use		
	BEC - commodity group	2009	2010*
		DKK mio.	
	Imports, total	437 998	474 295
	Intermediate goods for agriculture, total	11 286	12 417
	Cereals, unmilled or semi-processed	1 606	1 472
	Feeding stuff for animals	6 881	7 965
	Fertilizers	1 255	1 424
	Other	1 544	1 555
	Intermediate goods for construction industry, total	32 498	33 469
	Timber, worked, coniferous	1 809	2 039
	Non-metallic mineral manufactures for const.	3 439	3 359
	Iron or steel products for construction	7 789	7 646
	Miscellaneous finished goods for construction	6 091	6 952
	Other	13 370	13 473
	Intermediate goods for other industries, total	129 540	143 030
	Oil seeds, oleag. fruit (excl. flour and meal)	1 173	1 374
	Pulp and waste paper	335	467
	Paper, paperboard and manufactures thereof	7 619	8 134
	Textile fibres	194	202
	Textile yarn	690	709
	Textile fabric	2 820	2 776
	Chemical elements and compounds	6 621	7 368
	Plastic materials and articles thereof	11 966	13 259
	Other chemical materials and products	10 340	11 703
	Iron and steel	11 342	13 775
	Non-ferrous metals	4 373	5 561
	Miscellaneous manufactures of metal	4 214	4 410
	Other raw materials and semi-manufactures	17 905	21 810
	Parts of non-elec. machinery, etc.	21 010	20 886
	Parts of elec. machinery etc.	10 142	10 695
	Other parts and accessories n.e.s.	3 066	3 208
	Parts and accessories of transport equipment	15 144	15 999
	Aircraft engines	50	100
	Engines for other transport equipment	538	595
	Fuels, lubricants and electric energy, total	30 914	37 537
	Coal, coke and briquettes	3 217	2 616
	Petroleum oils, crude	8 709	9 014
	Light and medium oils (motor spirit etc.)	4 947	5 867
	Gas oils and fuel oils n.e.s.	10 643	15 674
	Other fuels and lubricants, electric current	3 398	4 366
	Machinery and other capital equipment, total	57 483	56 572
	Agricultural and dairy machinery	2 054	1 890
	Office machines, automatic data processing equipment	10 981	12 523
	Construction machinery	698	841
	Other machinery and appliances, non-electrical	23 269	19 103
	Electrical machinery, apparatus and appliances	20 482	22 215
	Transport equipment, total	32 255	32 606
	Ships	8 734	8 191
	Aircraft	5 037	2 238
	Railway vehicles and industrial motor vehicles	5 868	6 041
	Passenger motor cars	12 616	16 136
	Goods for household consumption, total	137 942	152 247
	Food, beverages and tobacco	42 096	47 467
	Other non-durable consumer goods	24 766	26 706
	Clothing	21 253	23 946
	Footwear	4 625	5 081
	Other semi-durable consumer goods	22 209	24 445
	Pleasure craft, caravans, etc.	1 491	1 558
	Other durable consumer goods	21 502	23 042
	Goods not elsewhere specified	6 080	6 419

Table 339 Exports by origin

KONJ-Commodity group	2009	2010*
	DKK mio.	
Export, total	495 577	543 487
Agricultural products of animal origin, total	39 571	41 550
Live bovine cattle; meat from bovine animals, fresh, chilled or frozen	2 239	2 501
Live swine; meat of swine	23 046	23 615
Poultry; live killed or dressed; fresh, chilled or frozen	1 565	1 585
Butter	1 434	1 688
Cheese	7 278	7 570
Birds' eggs, in the shell	79	77
Pig fat and poultry fat	314	370
Bovine and equine hides and skins, undressed	125	281
Guts, bladders and stomachs of animals (excl. fish)	610	641
Edible offal of cattle, sheep, pigs and horses	1 334	1 530
Other agricultural products of animal origin	1 548	1 694
Agricultural products of vegetable origin, total	8 313	9 456
Cereals	1 979	3 024
Seeds, fruit and spores for sowing	1 503	1 570
Flowers, plants, fruits and vegetables	3 656	3 564
Other agricultural products of vegetable origin	1 175	1 299
Canned meat and milk, total	5 420	6 713
Canned meat	3 296	3 511
Canned milk	2 124	3 201
Manufactured goods, total (excl. canned meat and milk, ships, etc.)	369 060	399 909
Sugar and molasses	1 411	1 366
Other manufactured products of agricultural origin	20 590	20 586
Fish, crustaceans and molluscs, prepared or preserved	3 909	3 852
Feeding stuffs (excl. straw, roots, etc.)	5 182	5 844
Beer	1 676	1 816
Other beverages (excl. fruit and vegetable juices)	2 388	2 775
Animal and vegetable oils and fats	2 374	2 914
Medicinal and pharmaceutical products	42 503	51 807
Other chemical goods	34 086	36 957
Leather, leather manufactures; dressed furskins	354	447
Rubber manufactures, n.e.s	896	1 133
Wood and cork manufactures (excl. furniture)	3 685	3 343
Paper, paperboard, articles of paper pulp, of paper, or of paperboard	4 835	5 141
Textiles and clothing	24 702	27 371
Non-metallic mineral manufactures	9 089	6 647
Metals	8 796	9 996
Manufactures of metals, n.e.s	18 231	17 381
Machinery and instruments	123 044	133 309
Transport equipment, excl. ships of over 250 GT and aircraft	13 703	14 181
Furniture	11 750	11 814
Articles of artificial plastic materials, n.e.s	7 152	7 310
Other manufactured goods, n.e.s	28 704	33 919
Ships of over 250 GT, aircraft and drilling rigs and production platforms	5 626	4 871
Fish, crustaceans and molluscs, not prepared or preserved	10 470	11 680
Furskins, raw	4 126	7 383
Fuels, lubricants and electric current	43 982	52 930
Other goods	9 011	8 996

www.statbank.dk/konj2y

Table 340 (page 1 of 2) External trade by country and commodity group. 2010*

SITC Selected commodity groups	Total		Finland		France, Monaco		Italy	
	Exports	Imports	Exports	Imports	Exports	Imports	Exports	Imports
	—DKK mio.—							
Total	543 487	474 295	13 198	8 191	22 710	15 909	15 531	16 211
0 Food and live animals, total	91 321	53 287	1 873	224	3 162	1 955	4 733	2 200
01 Meat and meat preparations	28 452	8 609	232	22	477	312	2 029	313
02 Dairy products and birds' eggs	14 094	4 545	489	23	261	249	111	280
03 Fish (not marine mammals), crustaceans, molluscs, aqua.invert.	15 411	10 257	111	26	1 455	90	1 771	49
04 Cereals, and cereal preparations	6 340	4 393	89	45	312	347	51	351
05 Vegetables and fruit	2 819	9 648	91	51	37	399	71	880
06 Sugar, sugar preparations, and honey	2 418	1 483	226	34	16	164	41	35
07 Coffee, tea, cocoa, spices and manufactures thereof	1 352	3 406	52	8	23	120	17	46
08 Feeding stuff for animals (not including unmilled cereals)	5 853	7 673	346	1	211	111	380	119
1 Beverages and tobacco, total	6 228	6 470	220	21	125	955	564	1 138
11 Beverages	4 591	5 693	206	20	95	955	552	1 138
12 Tobacco and tobacco manufactures	1 638	777	14	1	31	-	12	-
2 Crude materials, inedible, except fuels total	24 119	15 046	481	574	646	298	688	244
21 Hides, skins, and furskins, raw	7 668	1 792	189	149	25	2	216	4
24 Wood and cork	950	4 811	5	366	14	9	4	3
28 Metalliferous ores and metal scrap	5 341	752	20	9	110	2	68	-
3 Mineral fuels, lubricants and related materials, total	53 582	38 073	534	1 050	1 655	213	53	11
32 Coal, coke and briquettes	1 447	2 664	-	1	7	-	2	-
33 Petroleum, petroleum products, and related products	40 865	32 276	531	1 049	1 634	212	51	9
34 Gas, natural and manufactured	7 084	61	2	-	14	-	-	2
35 Electric current	4 186	3 072	-	-	-	-	-	-
4 Animal and vegetable oils, fats, and waxes, total	3 221	3 204	27	11	23	87	69	77
5 Chemicals, and related products, n.e.s., total	88 315	56 070	3 016	697	4 414	3 408	2 561	1 779
51 Organic chemicals	9 981	5 343	69	116	576	271	236	204
52 Inorganic chemicals	826	2 481	21	47	14	58	21	18
53 Dying and tanning and colouring materials	3 407	3 101	143	33	170	78	64	102
54 Medical and pharmaceutical products	51 807	20 467	2 082	88	2 769	1 061	1 578	518
55 Ess. oils, resinoids, perfume materials; toilet and cleans. prep.	4 130	4 742	258	16	110	820	19	252
57 Plastics in primary forms	1 469	7 664	66	112	96	462	53	207
58 Plastics in non-primary forms	4 929	5 457	110	162	263	227	124	367
6 Manufactured goods classified chiefly by material, total	49 331	68 147	1 286	2 647	2 737	2 285	1 082	2 563
62 Rubber manufactures, n.e.s.	1 133	4 013	24	90	72	85	12	70
63 Wood and cork manufactures other than furniture	3 300	4 645	42	230	136	56	71	13
64 Paper, paperboard, articles of paper pulp, paper, or paperboard	5 141	10 161	235	755	408	335	96	220
65 Textile yarn, fabrics, made-up articles, n.e.s., related products	5 594	6 299	129	31	263	161	151	294
66 Non-metallic mineral manufactures, n.e.s.	6 647	6 640	193	157	534	183	122	381
67 Iron and steel	6 971	14 006	209	1 042	250	692	90	672
68 Non-ferrous metals, n.e.s.	2 972	6 143	32	142	209	301	50	244
7 Machinery and transport equipment, total	135 213	149 097	2 785	2 274	5 744	5 021	3 374	5 313
71 Power generating machinery and equipment	20 463	8 217	270	445	443	151	265	293
72 Machinery specialized for particular industries	18 353	9 711	295	218	724	297	365	736
73 Metalworking machinery	1 155	908	36	25	45	29	20	87
74 Gen. industrial mach. and equipment, n.e.s., mach. parts, n.e.s.	36 985	23 722	879	595	2 230	1 414	1 154	1 962
75 Office machines and automatic data processing machines	8 722	17 734	363	20	239	284	126	67
76 Telecomm., sound recording, reprod. apparatus and equipment	9 856	18 289	163	361	434	226	241	87
77 Electric. mach., appar., applian.s, n.e.s., electr. parts there of	20 625	24 961	471	500	956	788	924	654
78 Road vehicles (including air-cushion vehicles)	12 159	28 934	284	101	547	1 519	213	998
79 Transport equipment, n.e.s.	6 894	16 622	24	9	126	312	66	428
8 Miscellaneous manufactured articles, total	85 286	78 891	2 939	657	4 070	1 560	2 326	2 787
81 Prefabr. buildings; sanitary, plumbing, heating, n.e.s.	2 133	2 834	112	94	70	90	24	148
82 Furniture and parts thereof; bedding, mattresses and similar	11 549	8 206	189	43	999	37	171	327
83 Travel goods, handbags, and similar containers	537	1 273	29	2	21	54	11	35
84 Articles of apparel, and clothing accessories	21 770	23 845	1 523	37	783	261	803	1 182
85 Footwear	3 707	5 148	115	34	40	66	26	328
87 Profess., scientific and contr. instruments and apparatus, n.e.s.	15 955	10 125	368	115	976	317	753	158
88 Photo. appar., equipm. and supplies, optic. goods, n.e.s.	1 568	2 584	18	3	86	68	68	72
9 Commodities and transactions not classified elsewhere	6 870	6 011	37	36	134	128	81	100

Note: The table only contains selected 2-digit SITC groups, and consequently the figures do not add up to the totals shown.

www.statbank.dk/sitc2r4y

Netherlands		Polen		United Kingdom		Sweden		Germany		EU countries, total		Norway	
Exports	Imports	Exports	Imports	Exports	Imports	Exports	Imports	Exports	Imports	Exports	Imports	Exports	Imports
— mio. kr. —													
24 479	34 013	13 221	14 113	42 511	28 324	73 288	63 656	91 528	98 192	351 290	336 045	34 245	18 612
3 126	6 655	3 439	1 795	10 807	1 617	9 437	4 089	17 988	13 310	63 274	37 953	3 212	2 572
212	1 818	1 862	603	5 065	300	2 392	318	4 738	3 733	18 933	8 250	92	58
560	514	109	87	1 778	137	2 008	541	2 602	1 423	9 510	3 863	328	22
817	202	494	408	1 196	241	1 305	602	3 095	583	12 022	2 538	598	2 207
453	336	83	90	382	332	602	561	1 367	1 603	3 883	4 217	417	35
105	2 358	35	286	182	132	1 044	386	381	1 924	2 128	8 518	150	27
66	195	92	46	20	52	585	270	269	423	1 551	1 375	519	4
111	365	19	53	30	186	296	687	273	1 155	1 039	2 882	68	48
308	604	220	133	397	99	501	104	956	1 843	4 079	3 414	800	142
298	251	39	63	254	480	909	301	2 205	796	5 138	4 935	304	69
56	206	21	8	185	414	688	291	1 860	677	3 916	4 460	149	48
242	45	18	55	68	66	221	11	346	119	1 222	475	155	21
953	1 597	368	1 030	580	338	2 151	3 216	5 106	2 198	13 150	11 979	669	598
11	72	19	598	-	1	64	245	31	118	803	1 594	1	82
9	59	73	279	66	53	181	1 704	248	462	723	4 034	85	76
154	1	4	1	7	1	607	436	2 174	243	3 837	698	73	21
4 460	849	474	632	7 461	6 144	19 551	6 544	11 057	2 399	46 389	18 375	3 498	8 337
1	102	42	263	-	3	1	61	1 389	75	1 443	533	2	101
3 662	745	424	369	7 392	6 109	16 067	5 640	4 207	639	34 992	15 277	2 189	7 682
797	3	8	-	68	32	1 395	5	4 634	5	7 040	47	37	-
-	-	-	-	-	-	2 087	838	828	1 680	2 915	2 518	1 271	554
189	369	107	2	205	38	738	146	297	1 040	1 778	1 893	798	88
3 150	6 459	1 987	1 355	3 442	4 089	8 778	6 013	8 470	12 586	47 383	47 463	3 224	1 066
598	726	117	2	267	223	286	228	875	1 574	5 968	3 882	81	112
13	344	102	17	8	89	109	241	109	711	580	1 934	68	132
77	235	215	53	155	167	558	658	714	776	2 680	2 469	241	106
915	2 054	864	562	1 949	1 947	3 780	2 021	4 382	3 242	23 275	16 714	1 081	272
156	355	67	212	159	486	1 339	575	372	990	2 727	4 309	959	60
87	1 496	106	31	26	293	305	763	242	1 727	1 220	7 198	56	206
413	400	257	227	336	321	697	790	673	1 545	3 796	5 079	461	77
2 113	3 704	2 101	3 451	3 896	2 511	7 800	10 596	9 972	17 279	36 276	53 797	4 525	2 480
44	146	44	80	57	573	166	328	263	1 502	791	3 338	91	22
185	105	243	1 062	383	72	521	522	789	921	2 785	3 783	202	98
314	1 066	122	286	435	183	957	3 198	858	2 657	3 966	9 520	463	170
264	371	402	223	700	283	623	477	946	1 066	4 227	4 070	438	89
181	316	151	293	277	210	1 269	644	1 141	1 947	4 240	5 255	846	94
189	845	368	346	367	490	1 368	2 471	1 680	3 233	5 132	11 234	668	334
74	185	265	189	90	236	306	793	939	1 462	2 573	4 310	82	1 408
4 365	9 838	2 953	3 522	9 852	8 520	12 834	23 478	20 245	37 875	74 874	114 961	8 251	1 972
207	210	247	234	2 754	288	1 145	639	1 700	2 791	7 915	6 777	304	362
449	605	479	184	800	584	1 650	1 041	1 950	2 957	8 312	7 711	1 537	438
33	30	25	12	26	42	58	81	161	303	475	687	63	14
1 589	642	1 219	995	2 120	825	2 762	2 285	5 855	7 143	22 027	19 467	1 602	241
401	3 322	68	328	327	1 049	2 196	3 352	700	3 643	5 014	14 288	1 503	59
487	1 552	87	36	746	1 275	1 398	6 809	1 342	1 888	5 992	14 497	839	171
765	1 108	435	1 258	1 528	1 930	2 049	3 554	3 856	6 857	13 358	19 098	1 173	326
363	943	384	426	473	906	1 476	5 215	4 422	10 238	9 597	25 760	1 012	134
71	1 427	10	49	1 078	1 620	101	501	260	2 054	2 184	6 676	216	227
5 566	4 151	1 662	2 227	5 743	4 318	10 674	8 811	15 512	10 103	59 170	42 577	8 863	773
472	102	16	65	135	48	443	632	253	479	1 620	1 977	237	63
675	111	211	741	793	62	1 245	1 513	2 081	769	7 473	4 712	2 208	326
31	64	19	14	20	75	91	104	131	131	414	557	60	8
2 348	759	294	287	1 020	476	2 926	1 350	5 160	1 372	18 146	7 630	2 258	28
399	265	125	129	235	103	574	347	1 090	503	2 843	2 571	538	5
571	670	384	362	1 154	1 254	1 212	848	1 972	1 933	9 104	6 646	501	117
61	192	6	23	126	225	70	427	279	514	851	1 642	89	10
260	139	90	37	271	269	416	461	674	606	3 858	2 112	900	657

Table 340 (page 2 of 2) External trade by country and commodity group. 2010*

SITC Selected commodity groups	Russian Federation		Europe total		Africa total		USA	
	Exports	Imports	Exports	Imports	Exports	Imports	Exports	Imports
	mio. kr.							
Total	9 718	6 565	411 834	373 531	6 591	3 353	35 624	15 147
0 Food and live animals, total	3 074	112	71 312	42 695	1 312	274	2 139	691
01 Meat and meat preparations	1 357	-	20 639	8 309	169	1	879	1
02 Dairy products and birds' eggs	244	-	10 205	3 894	459	-	332	74
03 Fish (not marine mammals), crustaceans, molluscs, aqua.invert.	407	56	13 524	5 909	83	30	169	267
04 Cereals, and cereal preparations	175	1	4 603	4 277	39	-	261	11
05 Vegetables and fruit	18	-	2 398	8 774	96	105	33	180
06 Sugar, sugar preparations, and honey	8	3	2 143	1 397	121	12	5	8
07 Coffee, tea, cocoa, spices and manufactures thereof	17	-	1 211	3 049	2	51	20	10
08 Feeding stuff for animals (not including unmilled cereals)	230	53	5 286	3 987	112	68	28	101
1 Beverages and tobacco, total	7	3	5 610	5 050	92	287	132	216
11 Beverages	1	3	4 154	4 534	63	234	91	156
12 Tobacco and tobacco manufactures	6	-	1 456	516	29	54	41	61
2 Crude materials, inedible, except fuels total	244	241	15 290	13 071	131	286	199	341
21 Hides, skins, and furskins, raw	7	20	841	1 727	-	34	3	1
24 Wood and cork	3	210	828	4 394	1	19	10	121
28 Metalliferous ores and metal scrap	-	3	4 720	728	17	-	10	2
3 Mineral fuels, lubricants and related materials, total	43	4 054	50 141	31 070	12	2 165	2 167	891
32 Coal, coke and briquettes	-	775	1 445	1 409	-	343	-	131
33 Petroleum, petroleum products, and related products	43	3 278	37 431	26 534	8	1 822	2 167	756
34 Gas, natural and manufactured	-	-	7 079	56	4	-	-	4
35 Electric current	-	-	4 186	3 072	-	-	-	-
4 Animal and vegetable oils, fats, and waxes, total	244	36	2 857	2 041	5	57	134	100
5 Chemicals, and related products, n.e.s., total	1 908	230	55 860	50 606	1 801	31	12 389	1 692
51 Organic chemicals	94	13	6 580	4 074	272	3	1 278	349
52 Inorganic chemicals	6	103	689	2 179	2	1	61	147
53 Dying and tanning and colouring materials	58	3	3 096	2 595	30	14	44	54
54 Medical and pharmaceutical products	1 181	-	27 655	18 428	1 207	6	10 260	581
55 Ess. oils, resinoids, perfume materials; toilet and cleans. prep.	42	-	3 880	4 429	22	2	15	151
57 Plastics in primary forms	37	-	1 337	7 431	5	4	25	39
58 Plastics in non-primary forms	28	-	4 449	5 265	13	1	154	55
6 Manufactured goods classified chiefly by material, total	224	1 817	42 645	59 244	278	72	1 231	832
62 Rubber manufactures, n.e.s.	16	-	944	3 386	9	-	46	32
63 Wood and cork manufactures other than furniture	12	115	3 113	4 046	4	9	36	23
64 Paper, paperboard, articles of paper pulp, paper, or paperboard	13	50	4 713	9 783	13	-	41	58
65 Textile yarn, fabrics, made-up articles, n.e.s., related products	42	4	4 981	4 465	71	44	178	62
66 Non-metallic mineral manufactures, n.e.s.	54	11	5 336	5 505	35	6	226	162
67 Iron and steel	26	1 623	5 948	13 343	22	-	64	78
68 Non-ferrous metals, n.e.s.	11	11	2 708	5 937	30	-	103	41
7 Machinery and transport equipment, total	3 145	17	91 404	119 413	2 389	34	12 128	6 043
71 Power generating machinery and equipment	65	-	8 866	7 218	199	4	5 011	139
72 Machinery specialized for particular industries	783	3	11 417	8 391	797	4	1 219	672
73 Metalworking machinery	19	-	602	767	7	-	140	27
74 Gen. industrial mach. and equipment, n.e.s., mach. parts, n.e.s.	1 418	5	26 517	20 128	593	9	2 160	627
75 Office machines and automatic data processing machines	189	-	6 968	14 415	309	2	511	386
76 Telecomm., sound recording, reprod. apparatus and equipment	118	-	7 346	14 818	143	5	709	498
77 Electric. mach., appar., applian.s, n.e.s., electr. parts there of	311	5	15 608	20 095	152	4	1 782	686
78 Road vehicles (including air-cushion vehicles)	231	1	11 287	26 307	124	3	244	155
79 Transport equipment, n.e.s.	11	2	2 791	7 275	66	2	352	2 853
8 Miscellaneous manufactured articles, total	804	39	71 727	47 211	434	73	4 910	2 586
81 Prefabr. buildings; sanitary, plumbing, heating, n.e.s.	11	1	1 928	2 106	7	-	74	32
82 Furniture and parts thereof; bedding, mattresses and similar	32	19	10 172	5 200	38	1	464	30
83 Travel goods, handbags, and similar containers	15	-	511	581	1	1	3	8
84 Articles of apparel, and clothing accessories	181	6	21 285	10 344	22	44	65	46
85 Footwear	55	10	3 551	2 625	2	1	49	5
87 Profess., scientific and contr. instruments and apparatus, n.e.s.	341	3	10 521	6 994	164	1	1 820	1 678
88 Photo. appar., equipm. and supplies, optic. goods, n.e.s.	14	-	1 024	1 907	22	-	173	65
9 Commodities and transactions not classified elsewhere	26	16	4 988	3 128	137	72	196	1 756

Northern America total		South- and Central America total		Japan		China		Korea, Republic of		Asia total		Oceania total	
Exports	Imports	Exports	Imports	Exports	Imports	Exports	Imports	Exports	Imports	Exports	Imports	Exports	Imports
mio. kr.													
45 395	19 833	13 201	9 777	10 651	2 211	13 404	35 986	3 865	2 643	60 239	66 108	6 130	1 692
3 200	3 747	944	4 244	4 375	10	1 919	628	513	10	12 964	1 600	1 587	726
1 083	2	127	129	3 602	-	762	15	170	-	5 374	48	1 061	120
537	74	414	7	333	-	241	-	34	-	2 312	23	168	547
261	3 205	2	128	256	1	685	404	7	10	1 429	945	112	39
394	16	116	17	60	-	49	4	173	-	1 152	83	36	-
161	190	13	280	12	1	2	142	2	-	111	283	39	16
46	35	-	16	2	-	1	5	-	-	107	23	-	-
89	10	1	213	4	1	2	6	1	-	39	80	10	3
111	131	16	3 449	24	-	18	27	88	-	309	37	19	1
319	228	53	586	6	2	2	3	3	-	128	73	11	246
227	167	51	504	2	2	2	1	3	-	75	8	5	246
92	61	2	81	4	-	-	2	-	-	53	65	6	-
303	658	149	364	250	48	1 189	187	238	16	8 217	630	28	37
4	18	3	5	7	-	682	-	209	-	6 820	8	-	-
35	178	-	118	8	-	47	34	1	1	84	102	2	1
13	6	-	11	-	-	320	7	2	-	590	7	-	-
3 131	1 076	131	1 669	1	-	1	1	1	-	132	2 034	28	59
-	131	-	650	-	-	-	-	-	-	1	73	-	59
3 130	939	131	1 019	-	-	1	1	1	-	131	1 962	28	-
1	6	-	-	-	-	-	-	-	-	-	-	-	-
-	-	-	-	-	-	-	-	-	-	-	-	-	-
138	100	141	354	10	1	10	-	4	-	77	651	2	-
13 967	1 744	3 754	1 402	3 199	232	2 451	1 050	519	89	12 043	2 232	890	54
1 285	351	717	59	283	90	269	378	44	7	1 002	854	124	3
70	152	3	4	1	17	3	62	12	10	45	141	17	3
73	57	28	180	2	32	18	123	7	-	150	255	30	1
11 585	599	2 128	1 077	2 652	26	1 802	234	301	7	8 634	339	597	17
103	157	35	20	4	2	13	52	3	1	73	105	17	29
31	47	17	2	1	17	34	47	2	49	78	181	-	-
195	59	87	1	9	17	85	33	2	9	174	131	11	1
2 035	882	650	317	174	280	620	4 678	500	352	3 217	7 623	499	10
60	35	8	4	6	77	49	235	4	89	100	587	13	-
92	24	1	127	9	1	8	302	5	-	80	439	9	-
128	59	24	8	23	8	62	250	20	2	178	311	85	-
227	63	13	42	16	33	35	811	16	55	275	1 682	28	2
469	166	197	46	73	16	80	697	29	11	424	914	185	3
134	78	180	23	3	33	38	165	8	37	649	561	35	-
112	61	31	8	2	28	44	69	1	-	86	136	5	-
16 006	6 723	5 936	671	1 323	994	5 736	11 225	1 589	1 979	17 291	22 074	2 179	181
7 612	189	821	48	106	175	1 281	277	336	178	2 400	756	565	1
1 500	698	736	10	198	71	795	356	306	10	3 546	582	355	25
156	27	76	4	58	34	96	49	29	4	302	108	11	1
2 464	648	1 143	125	287	155	2 244	2 003	666	123	5 819	2 787	449	25
634	411	76	62	28	79	150	2 115	28	26	712	2 816	21	27
871	661	61	19	130	135	216	1 510	76	50	1 296	2 767	136	19
2 020	719	306	47	141	93	867	2 447	125	115	2 261	4 026	276	70
349	160	35	8	56	237	37	678	8	527	295	2 448	70	8
399	3 209	2 682	347	320	14	49	1 788	16	946	660	5 784	296	4
5 962	2 725	1 249	71	1 260	513	1 253	18 092	303	162	5 074	28 592	827	218
111	33	3	-	9	5	8	602	5	6	76	694	8	1
584	36	83	9	216	2	56	2 436	36	1	571	2 959	98	2
7	9	-	2	3	1	2	483	2	1	15	681	2	-
222	58	10	15	23	5	7	8 898	6	14	203	13 383	25	2
83	6	-	10	8	1	14	1 150	2	6	62	2 501	9	5
1 943	1 740	523	10	520	262	738	618	176	19	2 454	1 214	349	167
194	67	12	1	37	142	82	266	15	24	299	608	15	-
334	1 951	194	101	54	131	223	121	195	34	1 095	598	79	160

Table 341 Transition from trade statistics to balance of payments statistics 2010

Imports		Exports	
Import of goods, external trade	474 295	Export of goods, external trade	543 487
+ Provisioning and bunkering	29 895		
+ Repairs, etc.	3 217	+ Repairs, etc.	1 723
- Returned goods	5 774	- Returned goods	5 774
- Freight, etc. import	12 877		
= Import of goods, balance of payments	488 755	= Export of goods, balance of payments	539 435

www.statbank.dk/13

Table 342 International trade in services

	2008*	2009*	2010*
	DKK mio.		
Export of services	369 385	295 909	336 769
Transport	237 762	168 346	204 867
Sea transport	193 954	139 539	174 762
Transport, passenger	2 016	1 573	1 667
Transport, freight	190 119	132 585	167 250
Transport, auxiliary services	1 819	5 382	5 843
Air transport	20 500	13 749	13 810
Other transport (than sea and air)	23 307	15 058	16 293
Travel	31 825	30 411	30 800
Other services	99 800	97 153	101 103
Communications services	4 538	3 219	3 015
Construction services	1 299	1 957	2 054
Insurance services	2 527	2 293	1 611
Financial services	2 650	3 247	3 616
Computer and information services	8 043	9 116	9 898
Royalties and license fees	13 611	15 798	15 475
Other business services	59 211	53 694	56 055
Personal, cultural and recreational services	2 783	2 275	2 422
Government services, n.i.e.	5 138	5 554	6 957
Import of services	317 829	272 261	285 058
Transport	171 743	135 627	145 668
Sea transport	137 181	108 568	117 453
Transport, passenger	170	265	259
Transport, freight	68 786	54 080	57 563
Transport, auxiliary services	68 228	54 223	59 631
Air transport	12 096	10 538	11 079
Other transport (than sea and air)	22 466	16 522	17 134
Travel	49 467	47 624	48 648
Other services	96 613	89 011	90 741
Communications services	4 700	3 735	3 755
Construction services	1 358	1 240	1 121
Insurance services	1 029	2 653	2 393
Financial services	1 718	1 969	1 787
Computer and information services	10 184	9 163	9 794
Royalties and license fees	8 870	9 813	9 998
Other business services	54 964	48 041	47 874
Personal, cultural and recreational services	8 481	5 964	6 275
Government services, n.i.e.	5 309	6 433	7 744

www.statbank.dk/uht6

Table 343 Major imported commodities

		2009	2010
		DKK thousands	
Imports, total		437 998 467	474 294 674
1	Medicaments consisting of mixed or unmixed products for therapeutic or prophylactic purposes, put up in measured doses "incl. those in the form of transdermal administration" or in forms or packings for retail sale (excl. medicaments containing antibiotics, medicaments containing hormones or steroids used as hormones, but not containing antibiotics, medicaments containing alkaloids or derivatives thereof but not containing hormones or antibiotics and medicaments containing provitamins, vitamins or derivatives thereof used as vitamins)	10 370 275	10 513 547
2	Gas oils of petroleum or bituminous minerals, with a sulphur content of $\leq 0,05\%$ by weight (excl. for undergoing chemical transformation and for undergoing a specific process as defined in Additional Note 4 to chapter 27)	5 311 892	7 563 883
3	Petroleum oils and oils obtained from bituminous minerals, crude (excl. natural gas condensates)	6 083 829	6 863 384
4	Motor cars and other motor vehicles, principally designed for the transport of persons, incl. station wagons, with compression-ignition internal combustion piston engine "diesel or semi-diesel engine" of a cylinder capacity $> 1.500 \text{ cm}^3$ but $\leq 2.500 \text{ cm}^3$, new (excl. motor caravans and vehicles specially designed for travelling on snow and other special purpose vehicles of subheading 8703.10)	4 427 928	6 034 803
5	Data-processing machines, automatic, portable, weighing $\leq 10 \text{ kg}$, consisting of at least a central processing unit, a keyboard and a display (excl. peripheral units)	3 946 367	5 094 433
6	Motor cars and other motor vehicles principally designed for the transport of persons (other than those of heading No 8702), incl. station wagons and racing cars, with spark-ignition internal combustion reciprocating piston engine, of a cylinder capacity $> 1.500 \text{ cm}^3$, but $\leq 3.000 \text{ cm}^3$, new (excl. 8703.10-10 and 8703.23.11)	3 876 805	4 557 521
7	Fuel oils obtained from bituminous materials, with a sulphur content of $\leq 1\%$ by weight (excl. for undergoing chemical transformation or a process as specified in Additional Note 4 to chapter 27)	1 633 649	4 449 986
8	Telephones for cellular networks "mobile telephones" or for other wireless networks	2 844 279	3 820 260
9	Sea-going vessels for the transport of goods and seagoing vessels for the transport of both persons and goods (excl. refrigerated vessels, tankers, ferry-boats and vessels principally designed for the transport of persons)	2 352 540	3 786 768
10	Oilcake and other solid residues, whether or not ground or in the form of pellets, resulting from the extraction of soya-bean oil	3 325 394	3 682 859
11	Sea-going tankers	3 768 806	3 489 031
12	Electrical energy	2 273 644	3 072 213
13	Gear boxes for machinery	3 940 720	2 917 474
14	Jet fuel, kerosene type	2 209 682	2 771 299
15	Floating or submersible drilling or production platforms	7 833 304	2 665 000
16	Motor cars and other motor vehicles principally designed for the transport of persons, incl. station wagons and racing cars, with spark-ignition internal combustion reciprocating piston engine, of a cylinder capacity $> 1.000 \text{ cm}^3$ but $\leq 1.500 \text{ cm}^3$, new (excl. those of heading 8702 and vehicles for the transport of persons on snow and similar vehicles of subheading 8703.10)	2 015 130	2 371 626
17	Parts of aeroplanes or helicopters, n.e.s. (excl. those for gliders)	2 452 932	2 342 307
18	Fresh or chilled bovine meat, boneless	1 701 351	2 221 304
19	Natural gas condensates	2 625 101	2 150 582
20	Parts and accessories of printers, copying machines and facsimile machines, n.e.s. (excl. electronic assemblies and of printing machinery used for printing by means of plates, cylinders and other printing components of heading 8442)	1 763 335	2 018 338
21	T-shirts, singlets and other vests of cotton, knitted or crocheted	1 618 527	1 951 980
22	Structures and parts of structures of iron or steel, n.e.s. (excl. bridges and bridge-sections; towers; lattice masts; gates; doors, windows and their frames and thresholds; equipment for scaffolding, shuttering, propping or pit-propping, weirs, sluices, lock-gates, fixed docks, landing stages and other maritime and waterway structures, and structures and parts of structures not manufactured exclusively or mainly from plate)	2 481 046	1 948 418
23	Reception apparatus for television, colour, with a screen width/height ratio $\geq 1,5$ (excl. with integral tube or incorporating video recording or reproducing apparatus and monitors, and television projection equipment)	2 467 283	1 835 908

24	Fresh or chilled Pacific salmon "Oncorhynchus nerka, Oncorhynchus gorbuscha, Oncorhynchus keta, Oncorhynchus tshawytscha, Oncorhynchus kisutch, Oncorhynchus masou and Oncorhynchus rhodurus", Atlantic salmon "Salmo salar" and Danube salmon "Hucho hucho"	1 331 215	1 772 049
25	Needles, catheters, cannulae and the like, used in medical, surgical, dental or veterinary sciences (excl. syringes, tubular metal needles and needles for sutures)	1 615 295	1 658 007

Note 1: Please note that data on some commodity items are withheld for reasons of statistical confidentiality, and the list should be used subject to caution.

www.statbank.dk/kn8y

Note 2: Please note that the international grouping of commodities are slightly changed year by year, i.e. that some commodity groups are combined and others are split up. Consequently, the ranking of the commodities can be changed exclusively as a consequence of changes in the grouping of commodities.

Table 344 Major exported commodities

		2009	2010
		DKK thousands	
Exports, total		495 577 253	543 486 918
1	Petroleum oils and oils obtained from bituminous minerals, crude (excl. natural gas condensates)	20 727 324	24 592 877
2	Medicaments consisting of mixed or unmixed products for therapeutic or prophylactic purposes, put up in measured doses "incl. those in the form of transdermal administration" or in forms or packings for retail sale (excl. medicaments containing antibiotics, medicaments containing hormones or steroids used as hormones, but not containing antibiotics, medicaments containing alkaloids or derivatives thereof but not containing hormones or antibiotics and medicaments containing provitamins, vitamins or derivatives thereof used as vitamins)	11 859 495	13 893 530
3	Generating sets, wind-powered	6 095 057	8 710 152
4	Raw furskins of mink, whole, with or without heads, tails or paws	4 094 726	7 297 770
5	Haemoglobin, blood globulins and serum globulins	6 287 092	6 500 769
6	Frozen boneless meat of domestic swine (excl. bellies and cuts thereof)	5 818 946	5 751 728
7	Enzymes and prepared enzymes, n.e.s. (excl. rennet and concentrates thereof, lipoprotein lipase and Aspergillus alkaline protease)	4 877 175	5 523 345
8	Hearing aids (excl. parts and accessories)	3 790 053	4 393 590
9	Fresh or chilled with bone in, domestic swine hams and cuts thereof	3 960 280	4 298 152
10	Electrical energy	2 603 180	4 185 670
11	Food preparations, n.e.s., containing, by weight, \geq 1,5% milkfat, \geq 5% sucrose or isoglucose, \geq 5% glucose or \geq 5% starch	3 846 224	4 103 830
12	Sea-going vessels for the transport of goods and seagoing vessels for the transport of both persons and goods (excl. refrigerated vessels, tankers, ferry-boats and vessels principally designed for the transport of persons)	1 660 319	3 649 636
13	Fuel oils obtained from bituminous materials, with a sulphur content of \leq 1% by weight (excl. for undergoing chemical transformation or a process as specified in Additional Note 4 to chapter 27)	3 067 983	3 482 980
14	Needles, catheters, cannulae and the like, used in medical, surgical, dental or veterinary sciences (excl. syringes, tubular metal needles and needles for sutures)	3 076 412	3 126 342
15	Gas oils of petroleum or bituminous minerals, with a sulphur content of \leq 0,05% by weight (excl. for undergoing chemical transformation and for undergoing a specific process as defined in Additional Note 4 to chapter 27)	3 046 790	3 058 425
16	Domestic swine, weighing $<$ 50 kg (excl. pure-bred for breeding)	2 335 659	2 957 283
17	Towers and lattice masts, of iron or steel	4 436 016	2 838 611
18	Fresh cheese "unripened or uncured cheese", incl. whey cheese and curd of a fat content, by weight, of \leq 40%	2 338 138	2 490 334
19	Motor spirit, with a lead content \leq 0,013 g/l, with an research octane number "RON" of $<$ 95	2 097 674	2 488 871
20	Food preparations, n.e.s., not containing milkfats, sucrose, isoglucose starch or glucose or containing, by weight, $<$ 1,5% milkfat, $<$ 5% sucrose or isoglucose, $<$ 5% glucose or $<$ 5% starch	2 503 550	2 483 649
21	Inverters having power handling capacity \leq 7,5 kVA (excl. of a kind used with telecommunication apparatus, automatic data-processing machines and units thereof)	1 166 080	2 335 523
22	Fresh or chilled boneless meat of domestic swine (excl. bellies and cuts thereof)	2 260 629	2 327 382
23	Fresh or chilled fore-ends and cuts thereof of domestic swine	2 015 300	2 301 683
24	Articles of jewellery and parts thereof, of silver, whether or not plated or clad with other precious metal (excl. articles $>$ 100 years old)	924 411	2 251 004
25	Waste and scrap of iron or steel, not fragmented "shredded", not in bundles (excl. slag, scale and other waste of the production of iron and steel; radioactive waste and scrap; fragments of pigs, blocks or other primary forms of pig iron or spiegeleisen; waste and scrap of cast iron, alloy steel or tinned iron or steel; turnings, shavings, chips, milling waste, sawdust, filings, trimmings and stampings; waste and scrap of primary cells, primary batteries and electric accumulators)	1 441 694	2 103 037

Note 1: Please note that data on some commodity items are withheld for reasons of statistical confidentiality, and the list should be used subject to caution.

www.statbank.dk/kn8y

Note 2: Please note that the international grouping of commodities are slightly changed year by year, i.e. that some commodity groups are combined and others are split up. Consequently, the ranking of the commodities can be changed exclusively as a consequence of changes in the grouping of commodities.

